

DK
다이코스
Sanitary Valves & Fittings



Certificate of Registration

품질경영시스템인증서

(주)다이코스

경기도 화성시 향남읍 동오리 89-8

아이씨알국제인증원은 상기업체의 품질경영시스템이
아래의 인증규격에 적합함을 인증합니다

ISO 9001:2008

인증관련 규정을 항상 준수한다는 조건으로 등록승인을 부여합니다.

인증범위

식품, 제약, 화학산업 분야의
위생용 펌프, 파이프, 핏팅, 기기류의
생산 및 부가서비스

인증일자 : 16th September 2011

인증서 번호 : Q365911

유효기간 : 15th September 2014

The Seal of ICR Limited was here to affixed
in the presence of :

President



본 인증서는 국제인증원인 아이씨알국제인증원(이하 아이씨알)이 인증대상 조직의 품질 경영시스템이
인증규격에 적합함을 인정함을 나타내며, 본 인증서는 아이씨알국제인증원(이하 아이씨알)에서 발급하며
본 인증서는 인터넷상 www.icr.com에서 "인증서"를 클릭하면 확인할 수 있습니다.

제 20110106005호

벤처기업확인서

업 체 명 : (주)다이코스
대 표 자 : 황양두, 김근수
소 재 지 : 경기 화성시 향남읍 동오리 89-8
확 인 유 형 : 기술평가보증기업(기술보증기금)
평 가 기 관 : 기술보증기금
유 효 기 간 : 2011년 09월 14일 ~ 2013년 09월 13일

위 업체는 벤처기업육성에관한특별조치법 제25조의
규정에 의하여 벤처기업임을 확인합니다.

2011년 09월 14일

KIBO 기술보증기금 이사장



CLEAN 사업장 인증서



사업장명 : (주)다이코스

대표자 : 황양두

소재지 : 경기도 화성시 서봉로 684-5

인증일자 : 2012년 09월 14일 (유효기간 : 인정일로부터 3년)

귀 사업장을 안전하고 쾌적한
'CLEAN 사업장'으로 인정합니다.

2012년 09월 14일



고용노동부장관



한국산업안전보건공단 이사장

공장등록증명(신청)서

※ []에는 해당되는 곳에 √표를 합니다.

(앞쪽)

접수번호	접수일자	처리기간	즉시
신청인	회사명 (주)다이코스	전화번호 031) 8059-6750	
	대표자 성명 황양두, 김근수	생년월일(법인등록번호) 134811-0222175	
	대표자주소(법인소재지) 경기도 화성시 향남읍 서봉로 684-5		
등록 내용	공장소재지 경기도 화성시 향남읍 서봉로 684-5	지목 공장용지	보유구분 자가 [], 임대 [√]
	공장등록일 2012-03-06	사업시작일	종업원수 남:10 여:0
	공장의 업종(분류번호) 탭, 밸브 및 유사장치 제조업 (29133)		
	공장부지면적 1,625.00 m ²	제조시설면적 392.04 m ²	부대시설면적 204.11 m ²
등록 조건			

등록변경 · 증설등 기재사항 변경내용(변경 날짜 및 내용)

「산업집적활성화 및 공장설립에 관한 법률 시행규칙」 제12조의3에 따라 위와 같이 공장등록증명서를 신청합니다.

2012년 03월 07일

신청인

황양두 (서명 또는 인)

화성시장

귀하

구비서류	없음	수수료
		1000 원

「산업집적활성화 및 공장설립에 관한 법률」 제16조([] 제1항 · [] 제2항 · [] 제3항)에 따라 위와 같이 등록된 공장임을 증명합니다.

2012년 03월 07일

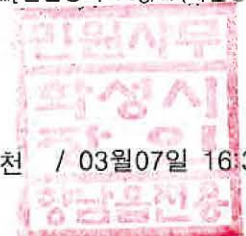
화성시장

210mm×297mm[일반용지 70g/m²(재활용품)]

화 성 시 장

(수인증지가 인명(첨부)되지 아니한 증명은 그 효력을 보증할 수 없습니다.)

강인천 / 03월07일 16:31



서류발행일:
2012년 03월 08일

CHANGE CHALLENGE **CREATION**



GREETINGS.

주식회사 다이코스에 관심가져 주시고 성원해 주시는 고객 여러분들께 진심으로 감사 드립니다.

다이코스는 창업 이래 국내 SANITARY 시장의 다양한 고객 요구에 부응 코자 다양한 분야의 끊임없는 연구와 개발로 국내 여러 유수의 업체에서 호평을 받고 있는 기업입니다.

21세기형 고객 중심의 경영방식으로 고객의 요구에 부응하는 제품을 연구 개발하여 고객의 만족도를 향상시키고, 현장 여건에 맞는 제품을 생산하기 위해 최선을 다하는 기업으로 끊임없이 노력하겠습니다.

감사합니다.

근수

대표이사 황양두. 김

CONTENTS

■ Standard & Option	10
■ Panel	12
Transfer Panel	12
Utility Panel	14
■ Diaphragm Valves	18
Manual Diaphragm Type	18
Manual Tank Bottom Diaphragm Type	20
Manual T Pattern Diaphragm Type	21
Pneumatic Diaphragm Type	22
Pneumatic Tank Bottom Diaphragm Type	23
Pneumatic T Pattern Diaphragm Type	24
Control Diaphragm Type	25
■ Pneumatic Valves	26
Pneumatic Butterfly Valve	26
Pneumatic 3Piece Ball Valve	26
Pneumatic 2Way Ball Valve	27
Pneumatic 3Way Ball Valve	27
Pneumatic FE Valve	28
Pneumatic LE Valve	28
Pneumatic Tank Bottom Valve	28
■ Manual Valves	29
Butterfly Valve	29
2Way Ball Valve	29
Sampling Valve	30
Check Valve	30
3Way Ball Valve	30
3Piece 2Way Ball Valve	31
2Way Ball Valve	31
■ Accessories	32
■ Weld Fittings	34
Long Weld Fittings	38
■ Clamp Union Fittings	39
■ Hex Union Fittings	43
■ DIN Union Fittings	49
■ SMS Union Fittings	50



DIKOS PRODUCTS

• ACTUATOR

• AIR SUPPLY PRESSURE

DX 다이코스
Sanitary Valves & Fittings

주소: 경기도 성남시
전화: 031-810-1111
팩스: 031-810-1111

Standard & Option

• Standard

자동밸브류

작동방법	Pneumatic Actuator & Cylinder (Single & Double Acting)
작동범위	Actuator - 0° ~ 90° Cylinder - 0 ~ 45mm
Air 사용압력	4~7kgf/cm ²
Air 연결구	ø6
밸브형식	항시닫힘 (Normal Close) 항시열림 (Normal Open)

수동밸브류

작동방법	Manual Handle
작동범위	레버형 Handle - 0° ~ 180° (22.5° 잠금장치) 회전형 Handle - 0 ~ 45mm
재질	STS304 & PLASTIC

재질

Pipes	STS304 - KS D 3585 STS304TBS
	STS3316L - KS D 3585 STS316LTBS
Investment Castings	STS304 - KS D 4103 SSC13, ASTM A351 CF8
	STS316 - KS D 4103 SSC14, ASTM A351 CF8M
	STS316L - KS D 4103 SSC16, ASTM A351 CF3M
Seals	EPDM - 사용온도 : -40°C ~ 130°C
	N.B.R - 사용온도 : -25°C ~ 130°C
	SILICON - 사용온도 : -50°C ~ 200°C
	TEFLON - 사용온도 : -180°C ~ 260°C FDA, CFR 21 Section 177.1550
	TFM - 사용온도 : -180°C ~ 260°C FDA, CFR 21 Section 177.1550

연결방식

WELD (KS D 3585)

HEX-UNION (ISO 2853)

CLAMP-UNION (ISO 2852)

DIN-UNION (DN 11851)

SMS-UNION 외

표면조도측정

내면의 표면조도 $RA \leq 0.6 \mu m$

외면의 표면조도 $RA \leq 0.6 \mu m$

검사 및 시험

밸브류 내압검사	수압 $6kgf/cm^2$
밸브류 작동검사	100회 이상 작동 검사
표면검사	표면조도 측정기 그래프 및 육안검사

• Option

자동 및 수동밸브류 리미트스위치 또는 근접센서 부착

자동 및 수동밸브류 솔레노이드 밸브 부착

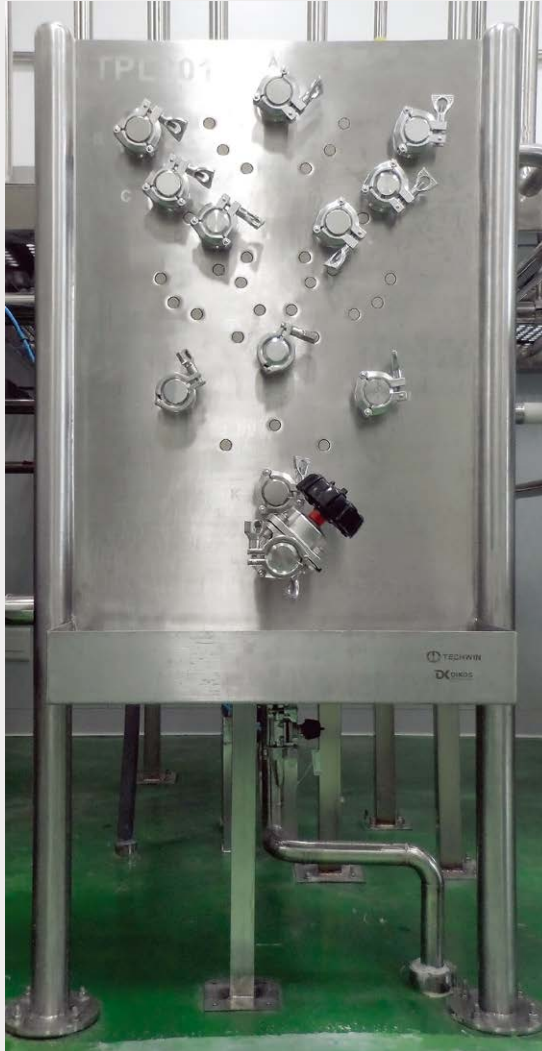
비례제어 UNIT 장착

특수재질 (하스텔로이-C외) 제작

전해연마

Panel

Transfer Panel



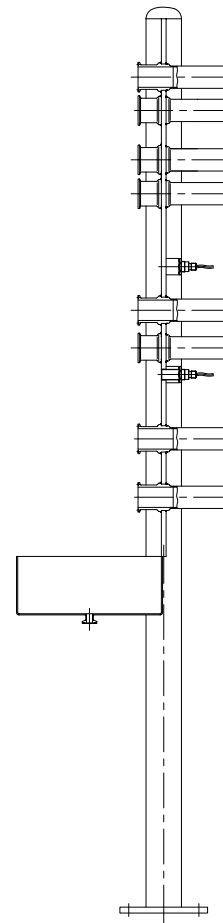
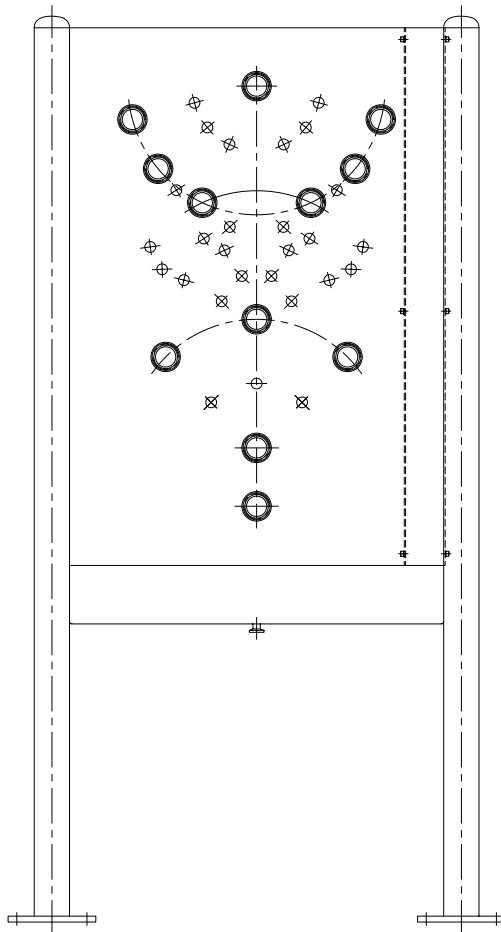
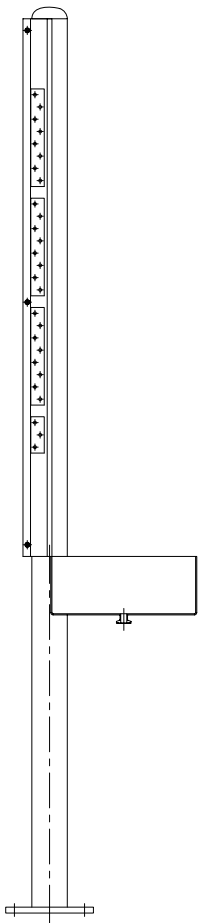
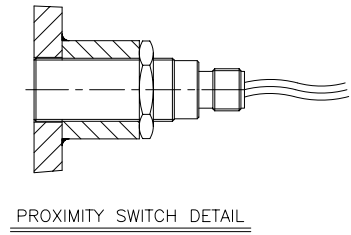
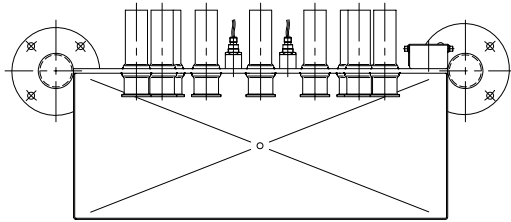
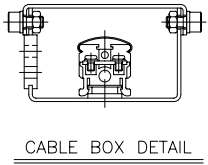
Features & Benefits

당사에서 제작되어지는 Transfer Panel & Utility Panel은 생산 시스템 내의 여러 생산 공정을 통해 이송되는 유체를 Jumper 또는 U-Bend를 통해 원천적 교차 오염을 방지해 줍니다. 또한 Transfer Panel & Utility Panel은 3Port에서 100Port에 이르기 까지 단순한 Panel에서 부터 고도로 복잡한 3차원 전기제어 장치 구성 등 다양하게 제작되어 질 수 있습니다.

이는 현재 제약, 바이오, 정밀화학 등 다양한 분야에 적용되고 있습니다.

Size	ISO 1/2S~2S
Connection	ISO Ferrule, Weld
Material	Panel : STS316L Support : STS304
Surface Treatment	Internal Ra≤0.4μm External Ra≤1.0μm M.P or E.P

Transfer Panel TPL101



Panel

Utility Panel



Features & Benefits

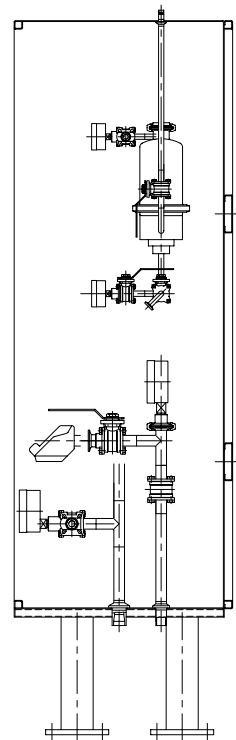
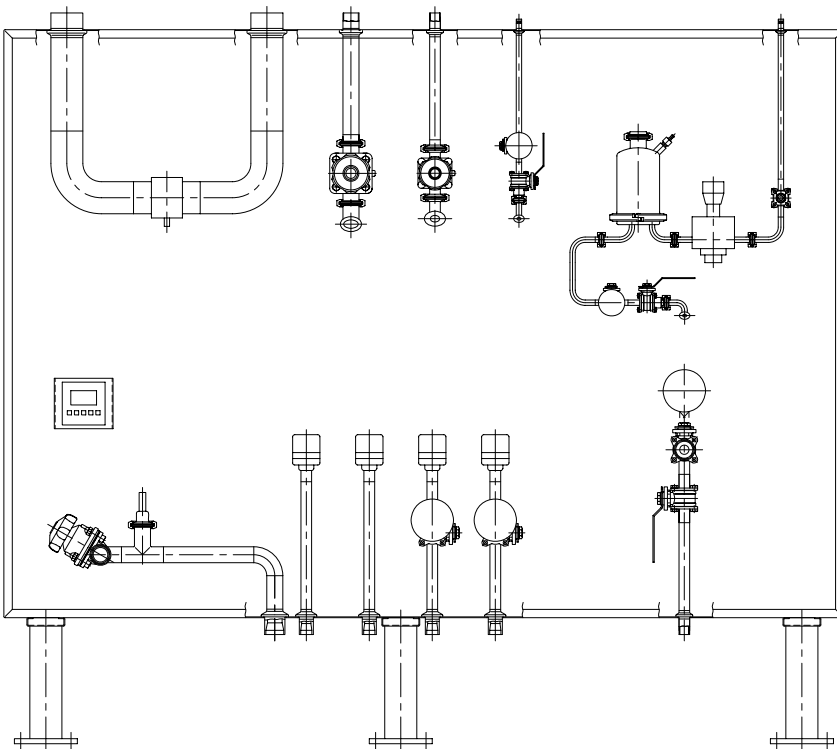
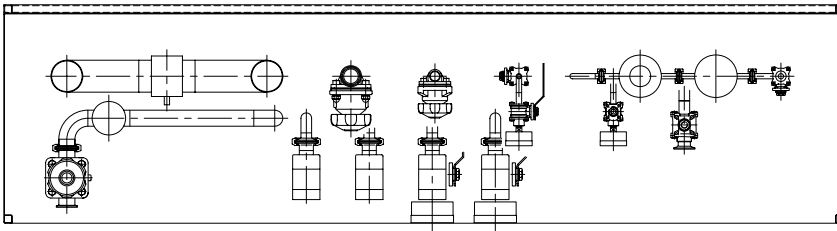
당사에서 제작되어지는 Transfer Panel & Utility Panel은 생산 시스템 내의 여러 생산 공정을 통해 이송되는 유체를 Jumper 또는 U-Bend를 통해 원천적 교차 오염을 방지해 줍니다. 또한 Transfer Panel & Utility Panel은 3Port에서 100Port에 이르기 까지 단순한 Panel에서 부터 고도로 복잡한 3차원 전기제어 장치 구성 등 다양하게 제작되어 질 수 있습니다.

이는 현재 제약, 바이오, 정밀화학 등 다양한 분야에 적용되고 있습니다.

Size	ISO 1/2S~2S
Connection	ISO Ferrule, Weld
Material	Panel : STS316L Support : STS304
Surface Treatment	Internal $Ra \leq 0.4\mu m$ External $Ra \leq 1.0\mu m$ M.P or E.P

Utility Panel

UPL110



Utility Panel



Features & Benefits

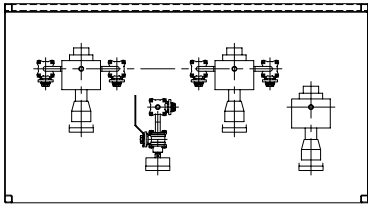
당사에서 제작되어지는 Transfer Panel & Utility Panel은 생산 시스템 내의 여러 생산 공정을 통해 이송되는 유체를 Jumper 또는 U-Bend를 통해 원천적 교차 오염을 방지해 줍니다. 또한 Transfer Panel & Utility Panel은 3Port에서 100Port에 이르기 까지 단순한 Panel에서 부터 고도로 복잡한 3차원 전기제어 장치 구성 등 다양하게 제작되어 질 수 있습니다.

이는 현재 제약, 바이오, 정밀화학 등 다양한 분야에 적용되고 있습니다.

Size	ISO 1/2S~2S
Connection	ISO Ferrule, Weld
Material	Panel : STS316L Support : STS304
Surface Treatment	Internal Ra \leq 0.4 μ m External Ra \leq 1.0 μ m M.P or E.P

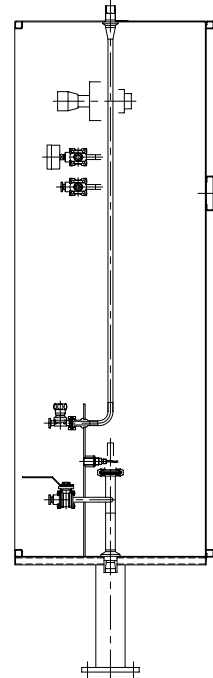
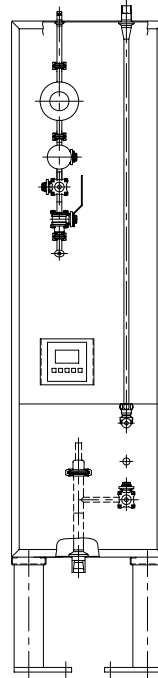
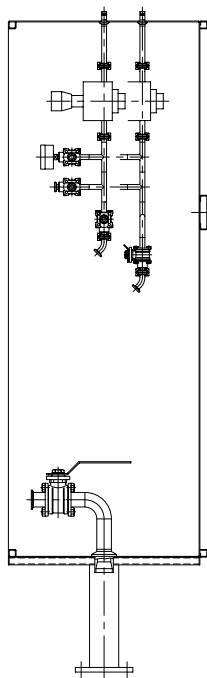
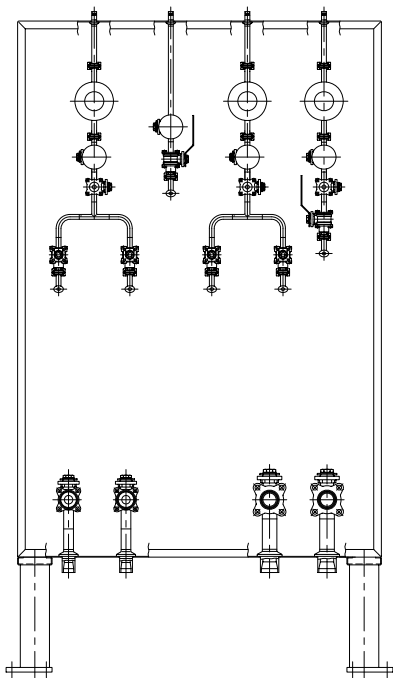
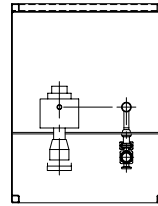
Utility Panel

UPL502



Utility Panel

UPL507



Diaphragm Valves

Manual Diaphragm Type



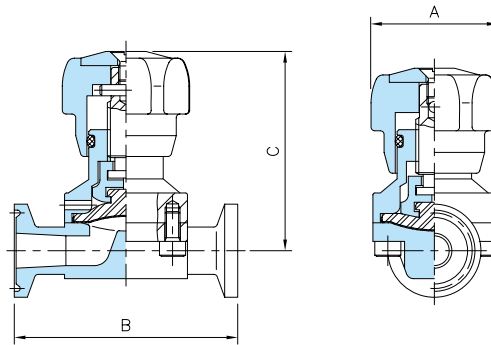
Features

Size	ISO 1/2S~2S
Connection	ISO Ferrule, Weld
Material	Body : Casting STS316L : Forging STS316L Bonnet : Cating STS304 Handwheel : M.C Nylon, STS304
Diaphragm	TFM - FDA, Single TFM - FDA, Two piece CFR21 Section 177.1550
Surface Treatment Internal	Ra≤0.4μm Other : Electrolytic Polishing
Working Temperature	-5°C~150°C
Working Pressure	6kg/cm ²

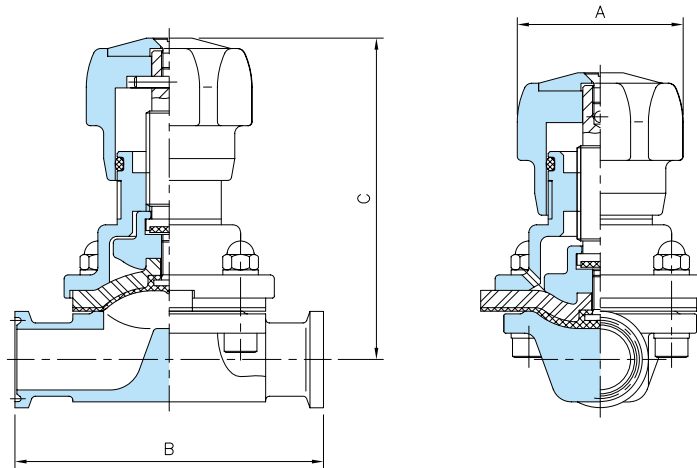
Dimension

	1/2S	3/4S	1S	1.5S	2S	2.5S	3S	4S
A	34	43	80	95	110	200	200	250
B	60	80	115	140	160	215	222	300
C	49	74	93	121	145	188	194	230

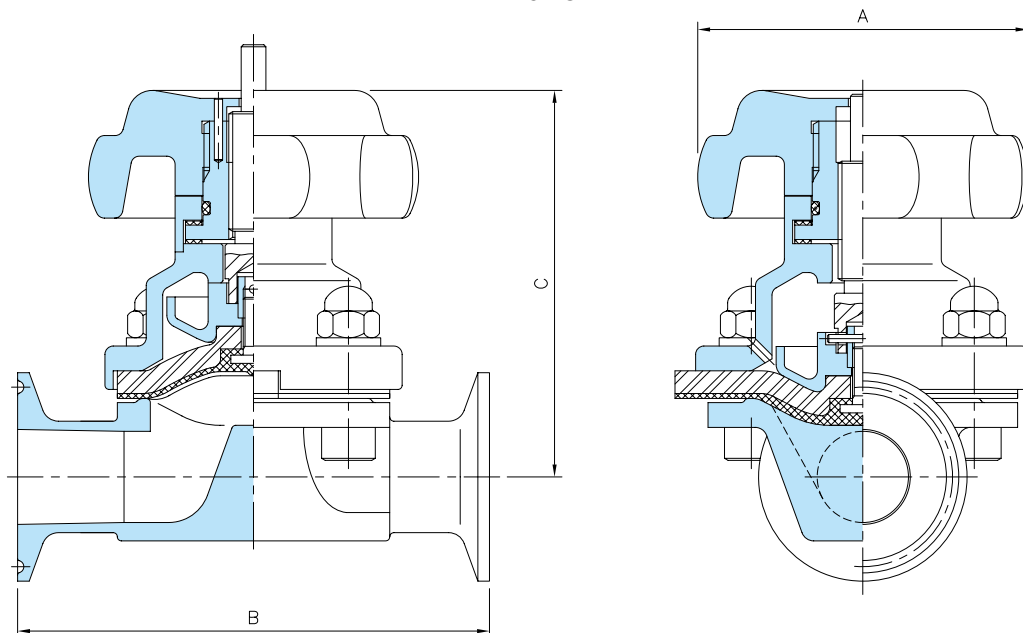
Manual Diaphragm Type (1/2S)
DV157A



Manual Diaphragm Type (3/4S)
DV157B



Manual Diaphragm Type (1S~2S)
DV157C



Diaphragm Valves

Manual Tank Bottom Diaphragm Type



Features

Size	ISO 1/2S~2S
Connection	ISO Ferrule, Weld
Material	Body : Forging STS316L
	Bonnet : Cating STS304
	Handwheel : M.C Nylon, STS304
Diaphragm	TFM - FDA, Single
	TFM - FDA, Two piece
	CFR21 Section 177.1550
Surface Treatment	Internal Ra≤0.4μm
	Other : Electrolytic Polishing
Working Temperature	-5°C~150°C
Working Pressure	6kg/cm ²



Dimension

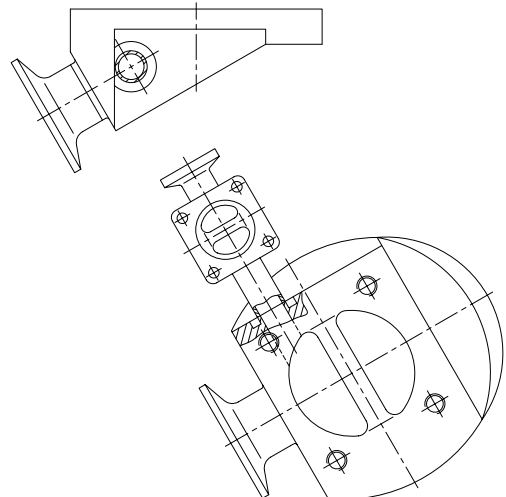
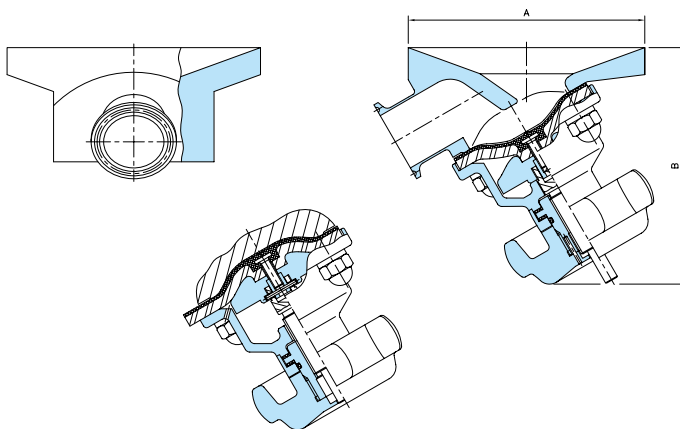
	1/2S	3/4S	1S	1.5S	2S	2.5S	3S	4S
A	70	80	100	140	175	244	254	350
B	93	96	116	154	187	254	256	315

Manual Tank Bottom Diaphragm Type (1/2S~2S)

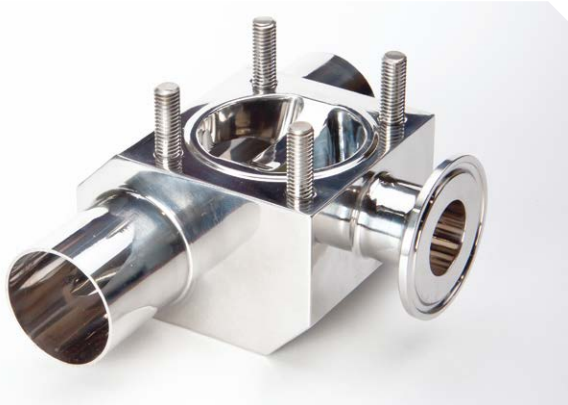
DV160A

Manual Tank Bottom Diaphragm Type (1/2S~2S)

DV160B



Manual T Pattern Diaphragm Type

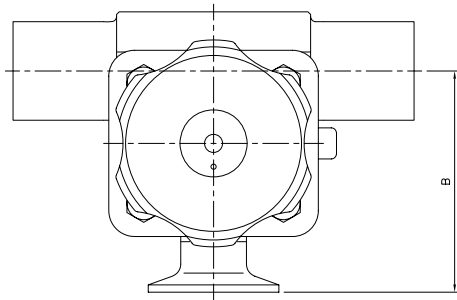


Features

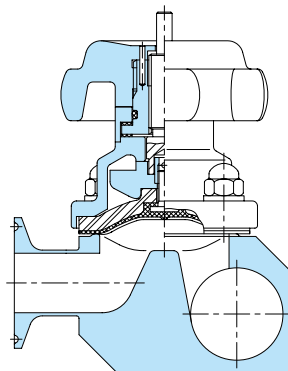
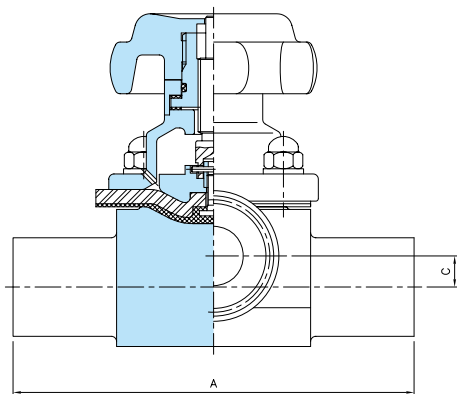
Size	ISO 1/2S~2S
Connection	ISO Ferrule, Weld
Material	Body : Forging STS316L
	Bonnet : Cating STS304
	Handwheel : M.C Nylon, STS304
Diaphragm	TFM - FDA, Single
	TFM - FDA, Two piece
	CFR21 Section 177.1550
Surface Treatment	Internal Ra≤0.4μm
	Other : Electrolytic Polishing
Working Temperature	-5°C~150°C
Working Pressure	6kg/cm ²

Dimension

	1/2S	3/4S	1S	1.5S	2S	2.5S	3S	4S
A	95	125	155	175	213	265	265	324
B	50	65	80	98	116	155.5	162.5	216
C	77	79	100	133	161	14.5	16.5	5.5



**Manual T Pattern Diaphragm Type
(1/2S~2S)
DV161**



Diaphragm Valves

Pneumatic Diaphragm Type



Features

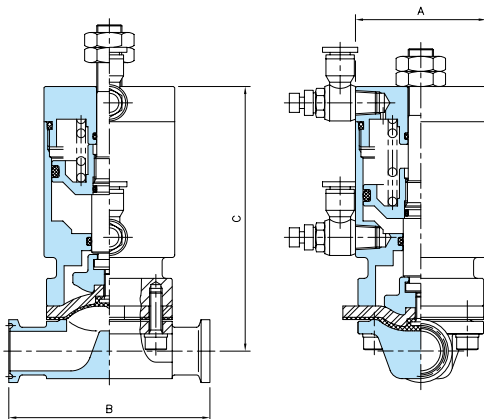
Size	ISO 1/2S~2S
Connection	ISO Ferrule, Weld
Material	Body : Casting STS316L : Forging STS316L
Diaphragm	Cylinder : STS304 TFM - FDA, Single TFM - FDA, Two piece CFR21 Section 177.1550
Surface Treatment	Internal Ra≤0.4μm Other : Electrolytic Polishing
Working Temperature	-5°C~150°C
Working Pressure	6kg/cm ²
Operating Air Pressure	4 ~ 7kg/cm ²

Dimension

	1/2S	3/4S	1S	1.5S	2S	2.5S	3S	4S
A	52	59	87	113	139	215	215	265
B	60	80	115	140	160	215	222	300
C	80	96	154	206	235	295	295	352

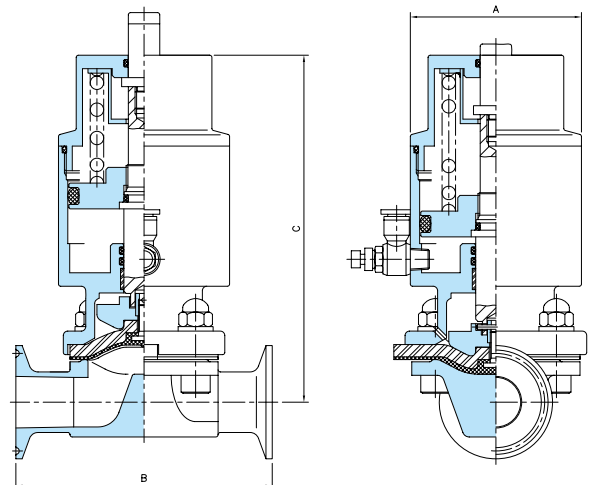
Pneumatic Diaphragm Type (Manual Controlable)

DV117A



Pneumatic Diaphragm Type (1/2S~2S)

DV117



Pneumatic Tank Bottom Diaphragm Type



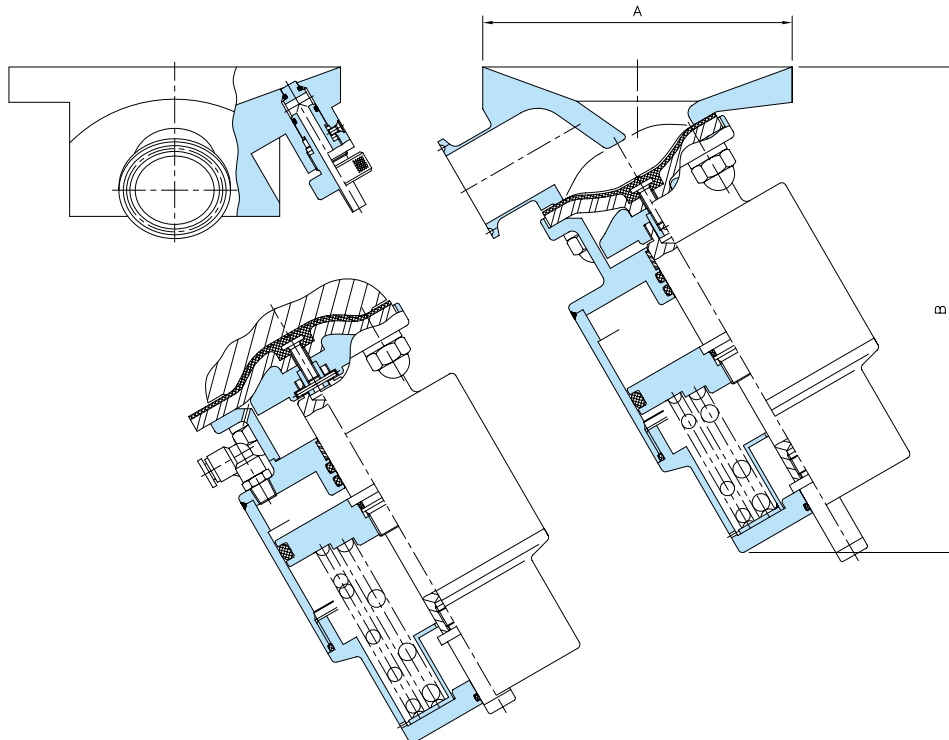
Features

Size	ISO 1/2S~2S
Connection	ISO Ferrule, Weld
Material	Body : Forging STS316L Cylinder : STS304
Diaphragm	TFM - FDA, Single TFM - FDA, Two piece CFR21 Section 177.1550
Surface Treatment	Internal Ra≤0.4μm Other : Electrolytic Polishing
Working Temperature	-5°C~150°C
Working Pressure	6kg/cm ²
Operating Air Pressure	4 ~ 7kg/cm ²

Dimension

	1/2S	3/4S	1S	1.5S	2S	2.5S	3S	4S
A	70	80	130	140	175	244	254	350
B	148	152	184	219	254	353	355	426

Pneumatic Tank Bottom Diaphragm Type (1.5S~2S) DV170A



Diaphragm Valves

Pneumatic T Pattern Diaphragm Type (1/2S)

DV171



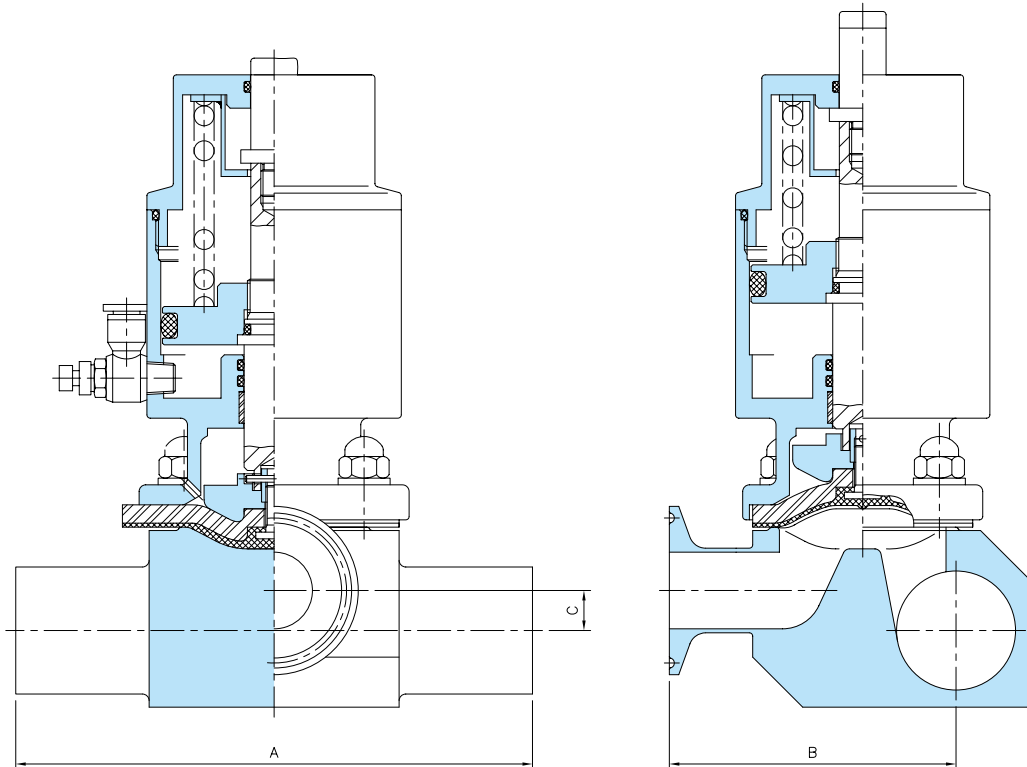
Features

Size	ISO 1/2S~2S
Connection	ISO Ferrule, Weld
Material	Body : Forging STS316L Bonnet : Cating STS304 Handwheel : M.C Nylon, STS304
Diaphragm	TFM - FDA, Single TFM - FDA, Two piece CFR21 Section 177.1550
Surface Treatment	Internal Ra≤0.4μm Other : Electrolytic Polishing
Working Temperature	-5°C~150°C
Working Pressure	6kg/cm ²

Dimension

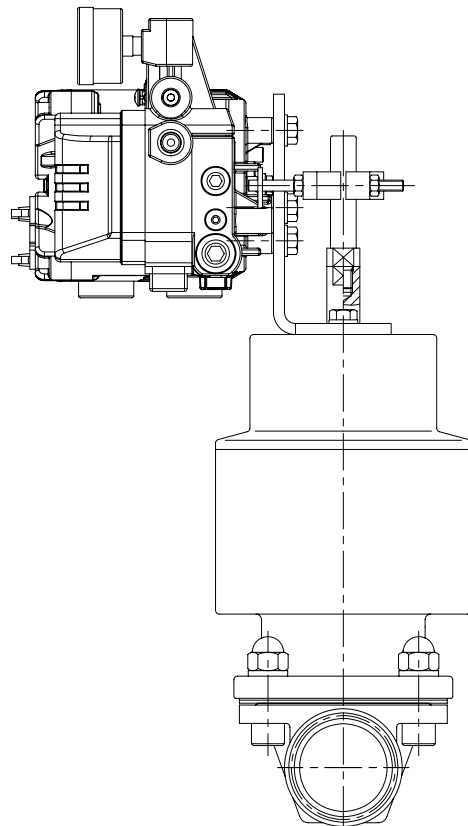
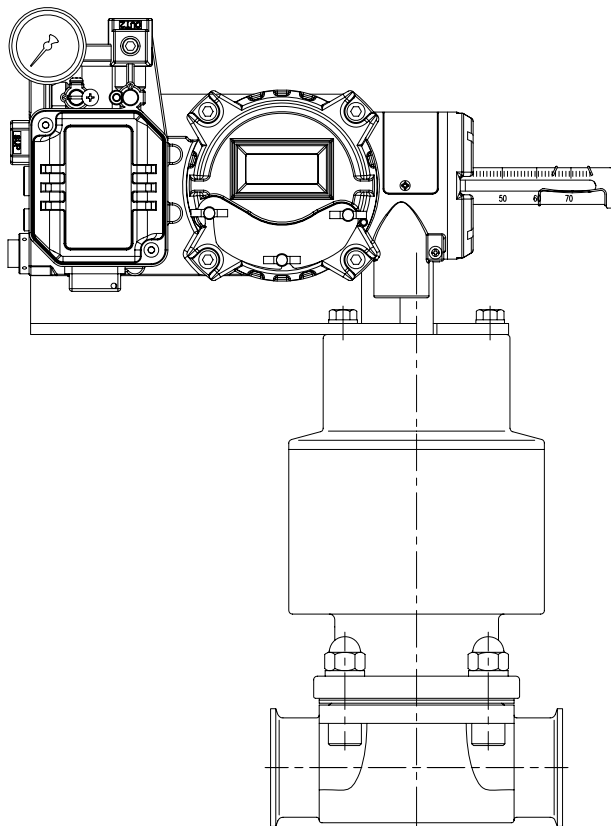
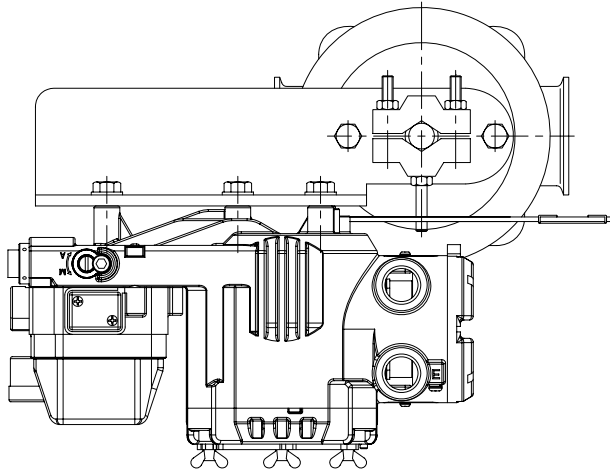
	1/2S	3/4S	1S	1.5S	2S	2.5S	3S	4S
A	95	125	155	175	213	265	265	324
B	50	65	80	98	116	155.5	162.5	216
C	95	101	161	218	251	14.5	16.5	5.5

Pneumatic T Pattern Diaphragm Type (1/2S) DV171



Control Diaphragm Type

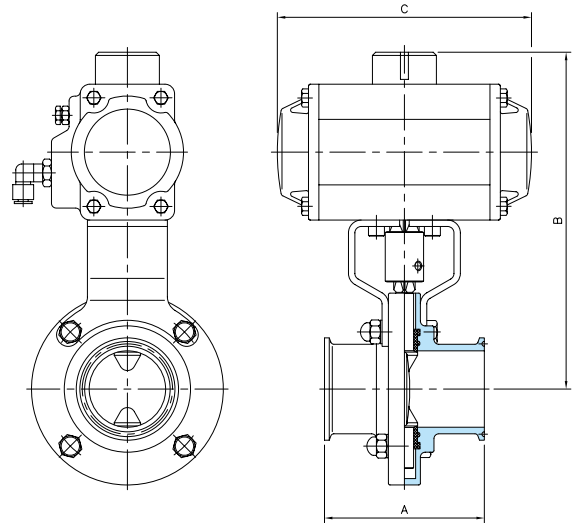
Control Diaphragm Type
(1S~2S)
DV118



Pneumatic Valves

Pneumatic Butterfly Valve

DVA114



Size	ISO 1S~4S
Connection	ISO Ferrule, Male, Weld, etc
Material	Body : Casting STS316L, STS304 Actuator : AL
Seat	Silicon, Epdm, Viton
Actuator	AIR TORQUE Single Acting, Double Acting ISO Flange
Surface Treatment	Internal $Ra \leq 0.64 \mu m$ External $Ra \leq 0.64 \mu m$
Working Temperature	$-10^{\circ}C \sim 120^{\circ}C$
Working Pressure	$6 kg/cm^2$

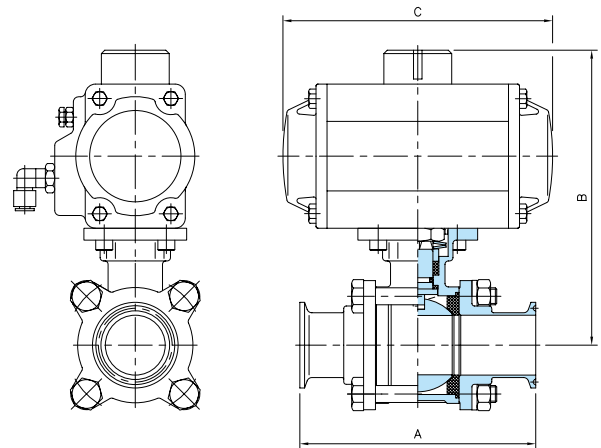
Dimension

	1S	1.5S	2S	2.5S	3S	4S
A	100	100	100	100	100	120
B	185	194	203	225	236	250
C	159	159	159	211	211	211

Pneumatic 3Piece Ball Valve

DVA123

Size	ISO 1S~4S
Connection	ISO Ferrule, Male, Weld, etc
Material	Body : Casting STS316L, STS304 Actuator : AL
Seat	Teflon
Actuator	AIR TORQUE Single Acting, Double Acting ISO Flange
Surface Treatment	Internal $Ra \leq 0.64 \mu m$ External $Ra \leq 0.64 \mu m$
Working Temperature	$-10^{\circ}C \sim 120^{\circ}C$
Working Pressure	$6 kg/cm^2$



Dimension

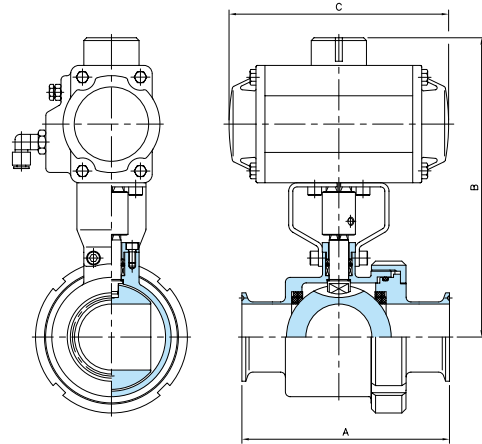
	1/2S	3/4S	1S	1.5S	2S	2.5S	3S	4S
A	88.5	90	110	140	150	210.5	220.5	317.6
B	170	180	210	240	265	310	340	470
C	141	141	159	159	211	248	268	345

Pneumatic 2Way Ball Valve

DVA115A

Dimension

	1S	1.5S	2S
A	120	140	150
B	210	215	221
C	159	159	159

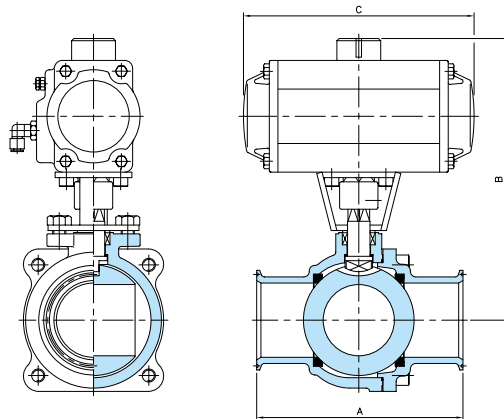


Pneumatic 2Way Ball Valve

DVA115B

Dimension

	2.5S	3S	4S
A	177	189	202
B	243	255	268
C	211	248	269

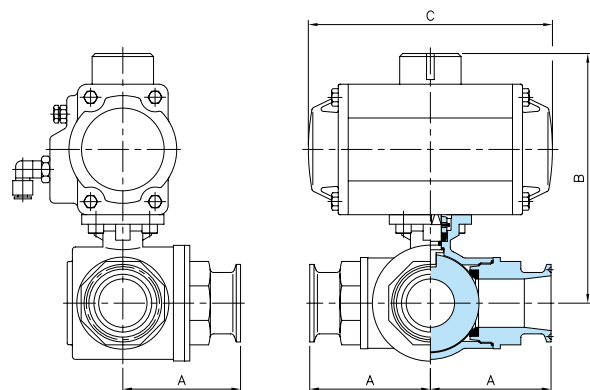


Pneumatic 3Way Ball Valve

DVA116

Dimension

	1S	1.5S	2S	2.5S	3S
A	62.5	75.5	87.5	130	160
B	154	168	196	232	255
C	159	159	211	211	248



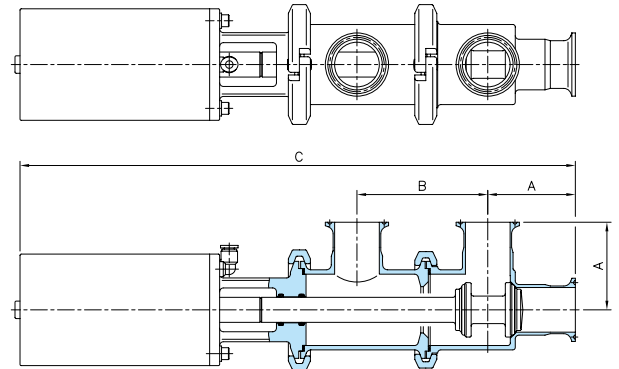
Pneumatic Valves

Pneumatic FE Valve

DVA113

Dimension

	1S	1.5S	2S	2.5S	3S
A	55	70	82	105	110
B	75	105	130	140	160
C	380	434	513	560	584

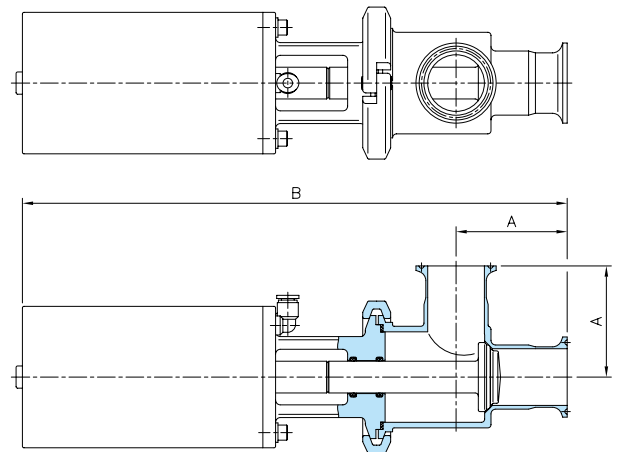


Pneumatic LE Valve

DVA120

Dimension

	1S	1.5S	2S	2.5S	3S
A	140	140	155	175	185
B	80	80	100	125	145
C	304	304	360	388	400

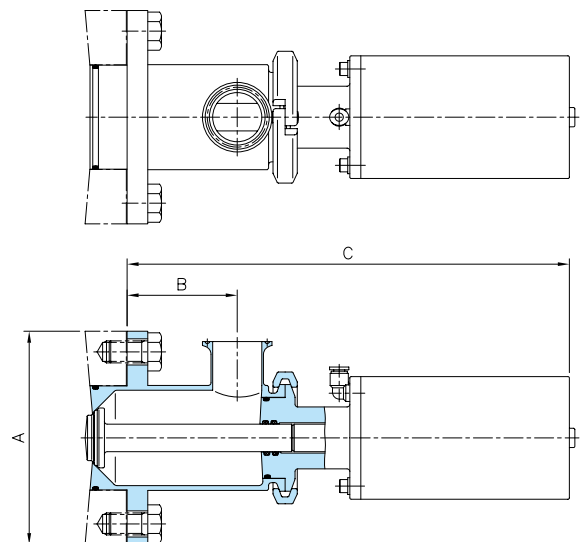


Pneumatic Tank Bottom Valve

DVA121

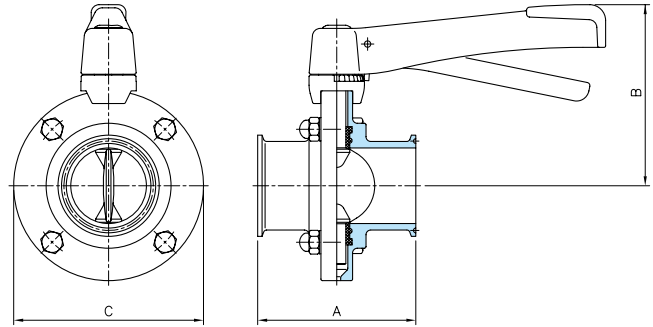
Dimension

	1S	1.5S	2S	2.5S	3S
A	140	140	155	175	185
B	80	80	100	125	145
C	319	319	376	403	415



Butterfly Valve

DVM111



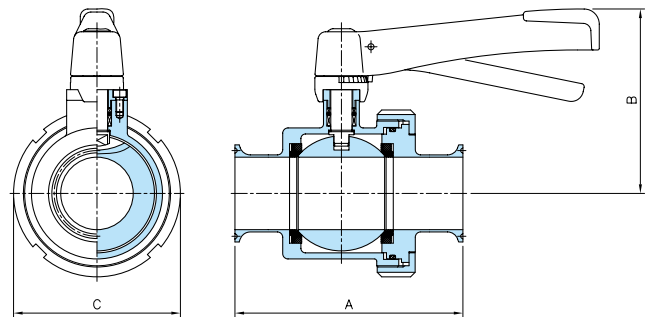
Size ISO 1S~4S
Connection ISO Ferrule, Male, Weld, etc
Material Body : Casting STS316L, STS304
 Handle : STS304, Plastic
Seat Silicon, Epdm, Viton
Surface Treatment Internal $Ra \leq 0.64\mu m$
 External $Ra \leq 0.64\mu m$
Working Temperature $-10^{\circ}C \sim 120^{\circ}C$
Working Pressure $6kg/cm^2$

Dimension

	1S	1.5S	2S	2.5S	3S	4S
A	100	100	100	100	100	120
B	114	123	131	136	147	161
C	85	103	120	130	148	176

2Way Ball Valve

DVM165



Size ISO 1S~2S
Connection ISO Ferrule, Male, Weld, etc
Material Body : Casting STS316L, STS304
 Handle : STS304, Plastic
Seat Teflon
Surface Treatment Internal $Ra \leq 0.64\mu m$
 External $Ra \leq 0.64\mu m$
Working Temperature $-10^{\circ}C \sim 120^{\circ}C$
Working Pressure $6kg/cm^2$

Dimension

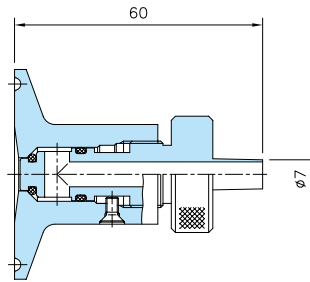
	1S	1.5S	2S
A	90	100	115
B	90	100	115
C	94	112	138

Manual Valves

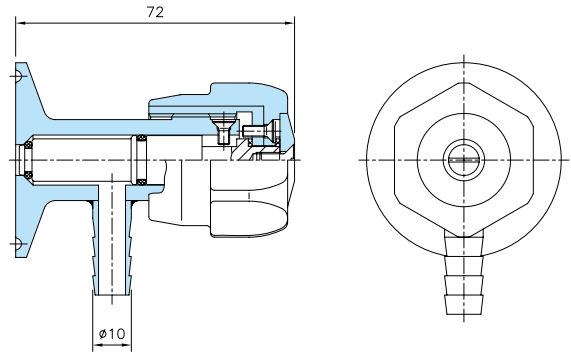
Sampling Valve



Sampling Valve - A
DVM155



Sampling Valve - L
DVM155L

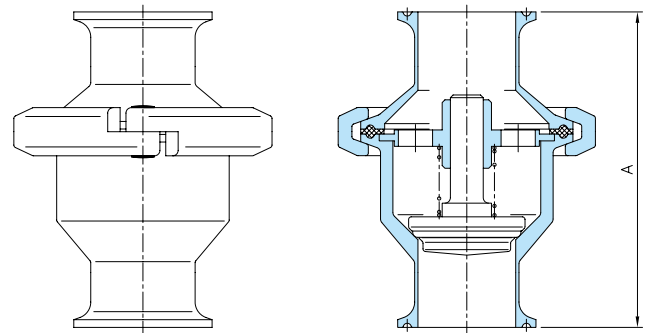


Check Valve

DVM123

Dimension

	1S	1.5S	2S	2.5S	3S	4S
A	110	115	125	175	190	238

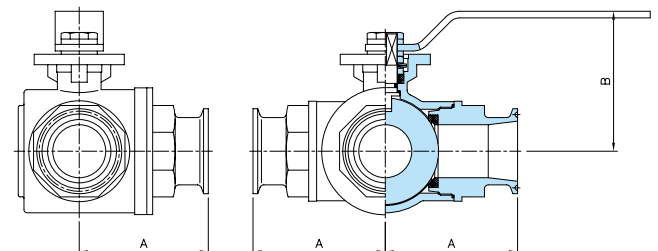


3Way Ball Valve

DVM122

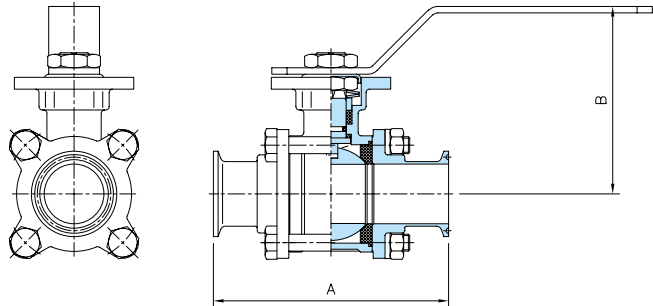
Dimension

	1S	1.5S	2S	2.5S	3S
A	62.5	75.5	87.5	130	160
B	107	107	150	104	116



3Piece 2Way Ball Valve

DVM117



Dimension

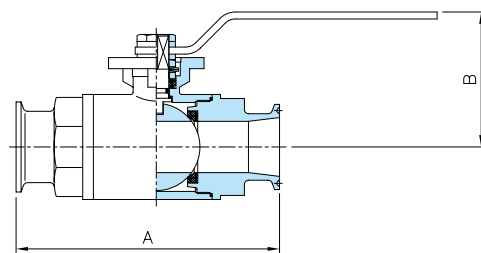
	1/2S	3/4S	1S	1.5S	2S	2.5S	3S	4S
A	88.5	90	110	140	150	210.5	220.5	317.6
B	109	110	136	141	148	195	204	323

2Way Ball Valve

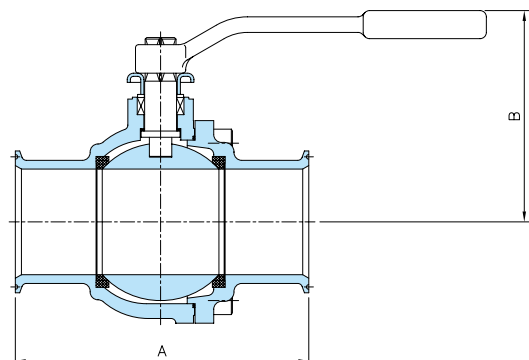
DVM117A



1/2S~2S



2.5S~4S



Dimension

	1/2S	3/4S	1S	1.5S	2S	2.5S	3S	4S
A	100	115	100	115	140	177	189	202
B	107	107	107	107	150	104	116	136

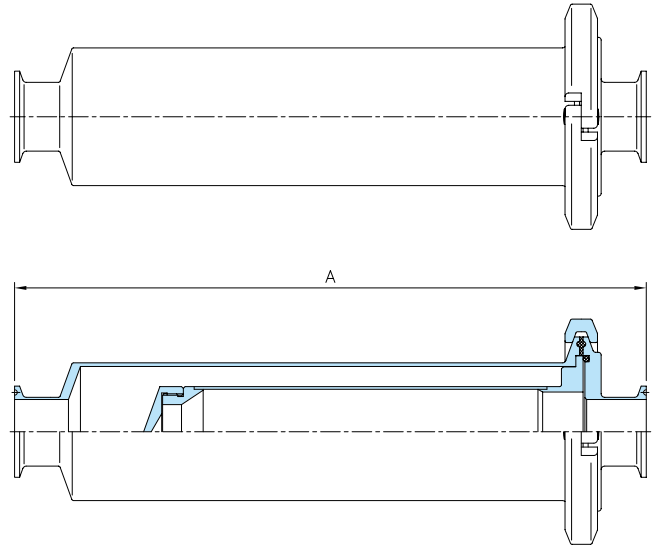
Accessories

Tube Strainer -SI-

DVE117

Dimension

	1S	1.5S	2S	2.5S	3S	4S
A	300	350	400	450	500	700

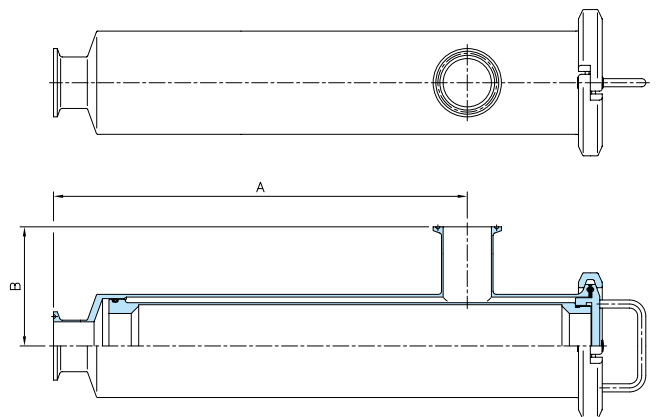


Tube Strainer -SL-

DVE116

Dimension

	1S	1.5S	2S	2.5S	3S	4S
A	256	306	362	400	450	481
B	88	88	101	117	117	143

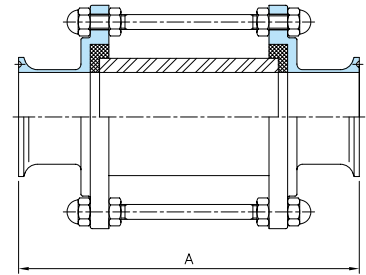
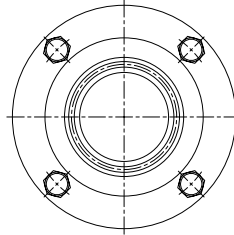


Sight Glass -SI-

DVE111

Dimension

	1S	1.5S	2S	2.5S	3S	4S
A	165	185	185	185	200	200

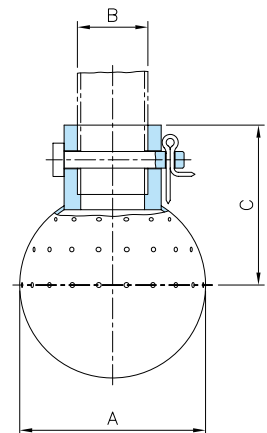
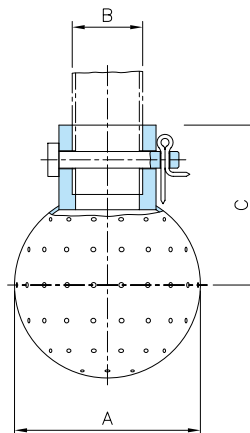


Spray Ball -Fix-

DVE127

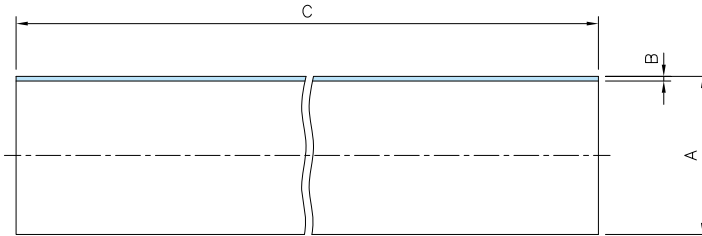
Dimension

	1S	1.5S	2S
A	90	100	100
B	25.4	38.1	50.8
C	65	75	75



Weld Fittings

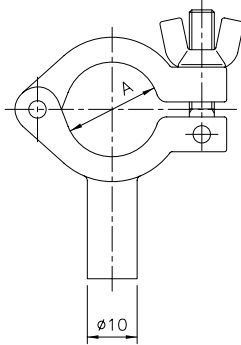
KS D 3585 Pipe
DVW111



Dimension

	A	B	C
1/2S	12.7	1.24	4000
3/4S	19.05	1.65	4000
1S	25.4	1.2	6000
1.5S	38.1	1.2	6000
2S	50.8	1.5	6000
2.5S	63.5	1.5	6000
3S	76.3	2	6000
4S	101.6	2	6000

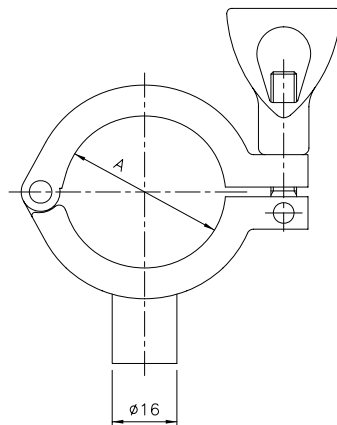
Pipe Hanger
DVW121



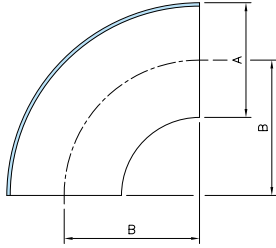
Dimension

	A
1/2S	12.7
3/4S	19.05
1S	25.4
1.5S	38.1
2S	50.8
2.5S	63.5
3S	76.3
4S	101.6

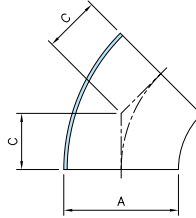
Pipe Hanger
DVW121



90° Elbow -W-
DVW112



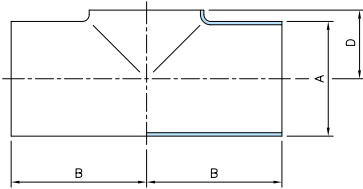
45° Elbow -W-
DVW122



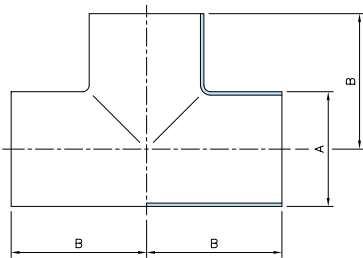
Dimension

	A	B	C	D
1S	25.4	35	14.5	17.7
1.5S	38.1	50	20.7	24.1
2S	50.8	60	24.9	30.4
2.5S	63.5	79	32.7	36.8
3S	76.3	82	34	43.2
4S	101.6	134.5	55.7	55.8

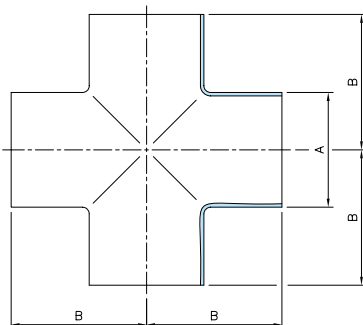
Low Neck Tee -W-
DVW123



Tee -W-
DVW113

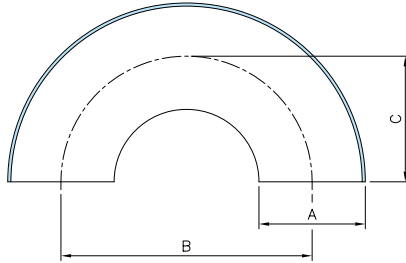


Cross Tee -W-
DVW124



Weld Fittings

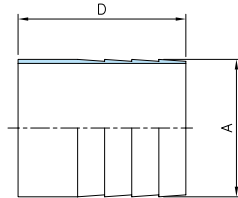
U-Bend -W-
DVW118



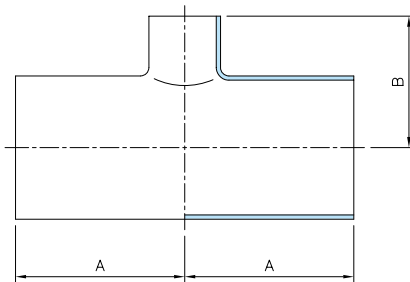
Dimension

	A	B	C	D
1S	25.4	70	35	40
1.5S	38.1	100	50	50
2S	50.8	120	60	58
2.5S	63.5	158	79	74
3S	76.3	164	82	72
4S	101.6	269	134.5	92

Hose Coupling -W-
DVW120



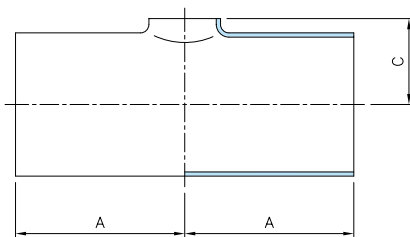
Reducing Tee-W-
DVW125



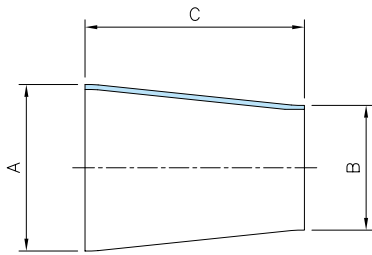
Dimension

	A	B	C
1Sx1/2S	35	28	15.2
1Sx3/4S	35	28	15.2
1.5Sx3/4S	50	35	21.6
1.5Sx1S	50	34	24.1
2Sx1S	60	47.6	30.4
2Sx1.5S	60	58.6	30.4
2.5Sx1S	79	52.3	36.8
2.5Sx1.5S	79	63.3	36.8
2.5Sx2S	79	69.3	36.8
3Sx1.5S	82	70	43.2
3Sx2S	82	76	43.2
3Sx2.5S	82	90	43.2
4Sx2S	134.5	97	55.8
4Sx2.5S	134.5	113	55.8
4Sx3S	134.5	116	55.8

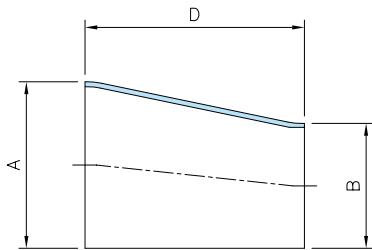
Low Neck Reducing Tee-W-
DVW126



Concentric Reducer-W-
DVW114



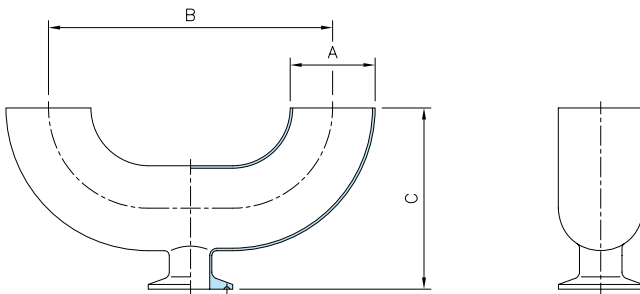
Eccentric Reducer-W-
DVW115



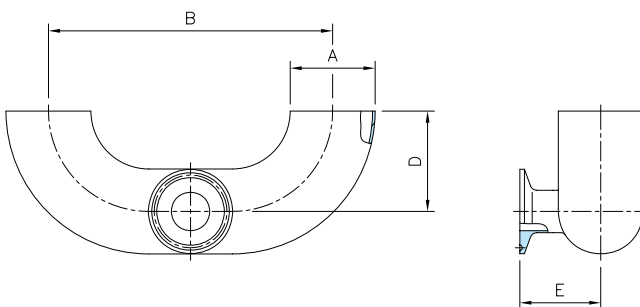
Dimension

	A	B	C	D
1Sx1/2S	25.4	12.7	25	27.5
1Sx3/4S	25.4	19.05	25	22
1.5Sx3/4S	38.1	19.05	50	52
1.5Sx1S	38.1	25.4	67	63.7
2Sx1S	50.8	25.4	67	70
2Sx1.5S	50.8	38.1	67	62.5
2.5Sx1S	63.5	25.4	67	71.5
2.5Sx1.5S	63.5	38.1	67	70
2.5Sx2S	63.5	50.8	67	61.3
3Sx1.5S	76.3	38.1	67	71.5
3Sx2S	76.3	50.8	67	70
3Sx2.5S	76.3	63.5	67	60
4Sx2S	101.6	50.8	103	108
4Sx2.5S	101.6	63.5	103	106.5
4Sx3S	101.6	76.3	103	91.4

Use Point -A-
DVC229



Use Point -B-
DVC237

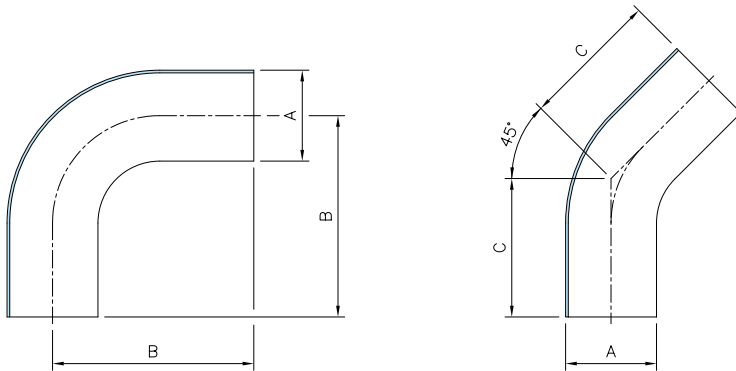


Dimension

	A	B	C	D	E
1Sx1/2S	25.4	114	60.7	35	25.7
1Sx3/4S	25.4	114	60.7	35	25.7
1.5Sx3/4S	38.1	152	82	50	32
1.5Sx1S	38.1	152	86.5	50	39.1
2Sx1S	50.8	178	102.9	60	45.4
2Sx1.5S	50.8	178	102.9	60	45.4
2.5Sx1S	63.5	228	128.2	79	51.8
2.5Sx1.5S	63.5	228	128.2	79	51.8
2.5Sx2S	63.5	228	128.2	79	53.8
3Sx1.5S	76.3	248	137.6	82	58.2
3Sx2S	76.3	248	137.6	82	60.2
3Sx2.5S	76.3	248	137.6	82	64.2
4Sx2S	101.6	356	198.3	130	72.8
4Sx2.5S	101.6	356	198.3	130	76.8
4Sx3S	101.6	356	198.3	130	78.8

Long Weld Fittings

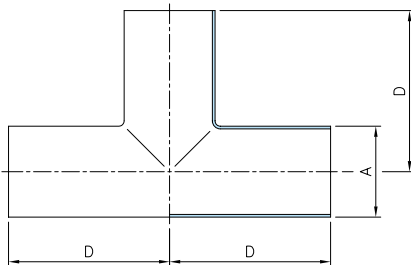
90° Long Elbow -W- SVW116 **45° Long Elbow -W- SVW112**



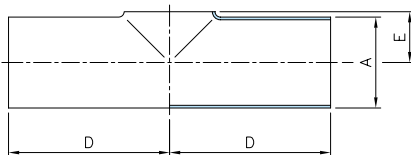
Dimension

	A	B	C	D	E
1/2S	12.7	48.1	40	35	10
3/4S	19.05	58.6	49	40	16
1S	25.4	65	49.5	50	17.7
1.5S	38.1	85	55.7	60	24.1
2S	50.8	100	64.9	80	30.4
2.5S	63.5	119	72.7	99	36.8
3S	76.3	127	79	102	43.2
4S	101.6	175	98.8	130	55.8

Long Tee -W- SVW117

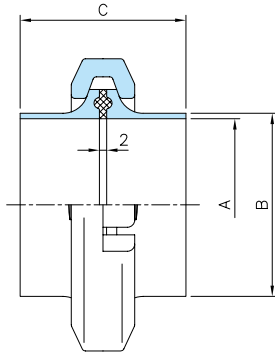


Low Neck Long Tee -W- SVW118

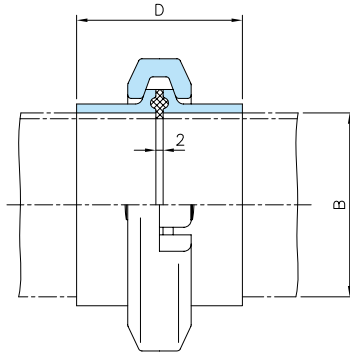


Clamp Union Fittings

Clamp Union -W-
DVC214



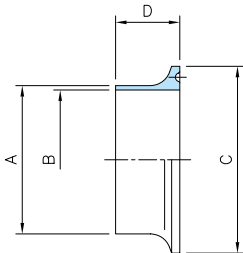
Clamp Union -EX-
DVC237



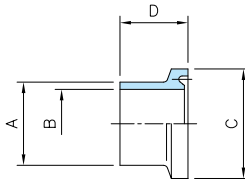
Dimension

	A	B	C	D
1S	23	25.4	42	42
1.5S	35.7	38.1	42	42
2S	47.8	50.8	46	46
2.5S	60.5	63.5	54	54
3S	72.3	76.3	58	58
4S	97.6	101.6	58	58

Ferrule -W- (ø34~12S)
DVC213



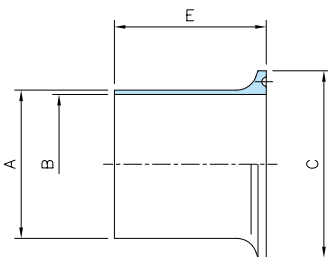
Ferrule -W- (1/2S~3/4S)
DVC213



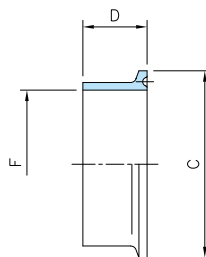
Dimension

	A	B	C	D	E	F
1/2S	12.7	9.4	25	13	35	-
3/4S	19.05	15.7	25	13	35	-
1S	25.4	23	50.5	20	45	25.5
1.5S	38.1	35.7	50.5	20	45	38.3
2S	50.8	47.8	64	22	45	51
2.5S	63.5	60.5	77.5	26	55	63.8
3S	76.3	72.3	91	28	55	76.6
4S	101.6	97.6	119	28	60	102

Long Ferrule -W-
DVC228



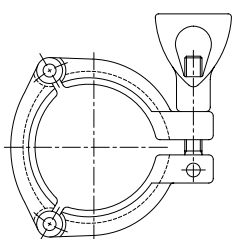
Ferrule -EX- (1S~4S)
DVC238



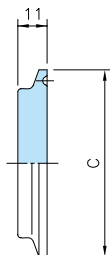
Dimension

	A	B	C	D
ø34x8A	13.8	10.5	34	17
ø34x10A	17.3	14	34	17
ø34x15A	21.7	17.5	34	17
1Sx15A	21.7	17.5	50.5	20
1Sx20A	27.2	23	50.5	20
1.5Sx25A	34	28.4	50.5	20
1.5Sx32A	42.7	37.1	50.5	20
2Sx40A	48.6	43	64	22
2.5Sx50A	60.5	54.9	77.5	26
3Sx65A	76.3	70.3	91	28
3.5Sx80A	89.1	83.1	105	28
4.5Sx100A	114.3	108.3	130	28
5Sx125A	139.8	133.8	163.5	30
6Sx150A	165.2	159.2	185	30
8Sx200A	216.3	210.3	240	30
10Sx250A	267.4	261.4	296	35
12Sx300A	318.5	312.5	350	35

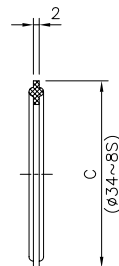
Clamp Band
DVC211



Ferrule Blank
DVC215



Ferrule Gasket
DVC230

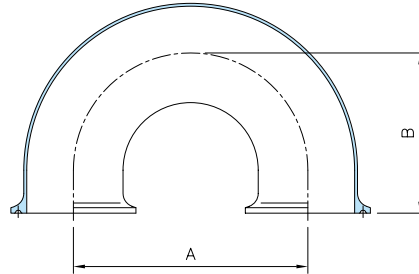


Clamp Union Fittings

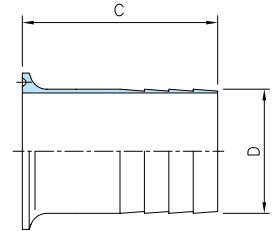
Dimension

	A	B	C	D
1S	70	55	60	25.4
1.5S	100	70	70	38.1
2S	120	82	80	50.8
2.5S	158	105	100	63.5
3S	164	110	100	76.3
4S	269	162.5	120	101.6

U-Bend -2F-
DVC226



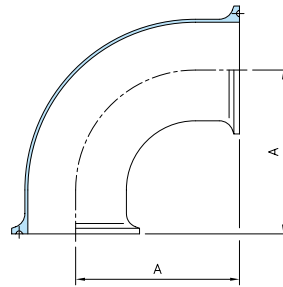
Hose Coupling -F-
DVC224



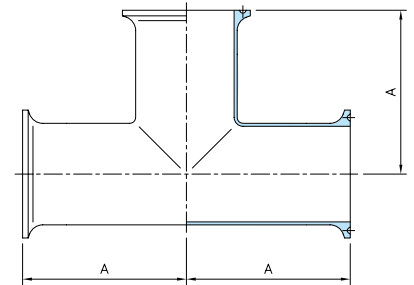
Dimension

	A	B	C
1S	55	34.5	32.7
1.5S	70	40.7	39.1
2S	82	46.9	47.4
2.5S	105	58.7	57.7
3S	110	62	66.2
4S	162.5	83.7	78.8

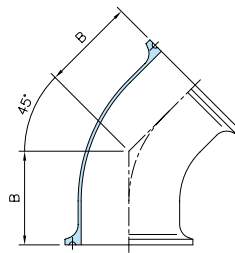
90° Elbow -2F-
DVC216



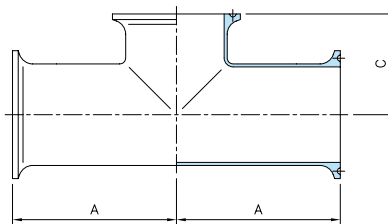
Tee -3F-
DVC218



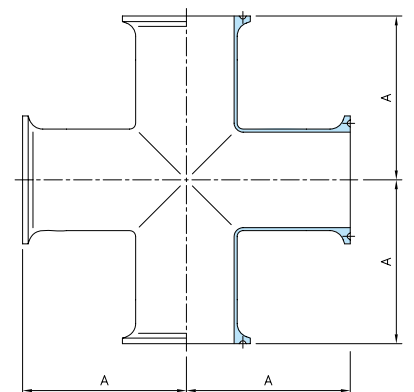
45° Elbow -2F-
DVC239



Low Neck Tee -3F-
DVC240

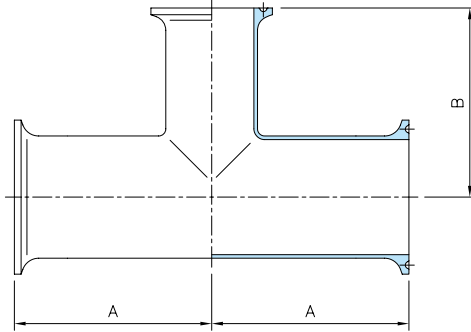


Cross Tee -4F-
DVC241



Clamp Union Fittings

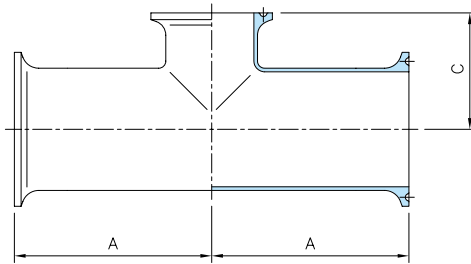
Reducing Tee-3F-
DVC242



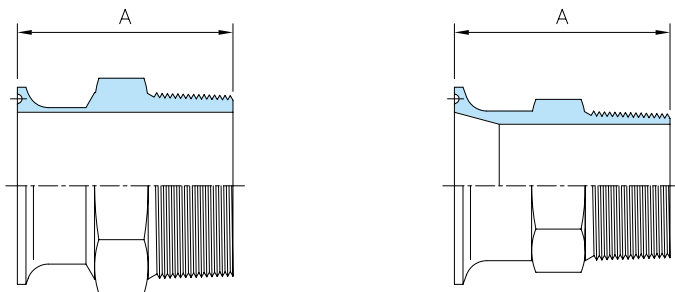
Dimension

	A	B	C
1Sx1/2S	55	41	28.2
1Sx3/4S	55	41	28.2
1.5Sx3/4S	70	48	34.6
1.5Sx1S	70	60	44.1
2Sx1S	82	67.6	50.4
2Sx1.5S	82	78.6	50.4
2.5Sx1S	105	72.3	56.8
2.5Sx1.5S	105	83.3	56.8
2.5Sx2S	105	91.3	58.8
3Sx1.5S	110	90	63.2
3Sx2S	110	98	65.2
3Sx2.5S	110	116	69.2
4Sx2S	162.5	119	77.8
4Sx2.5S	162.5	139	81.8
4Sx3S	162.5	144	83.8

Low Neck Reducing Tee-3F-
DVC243



Nipple Adapter -F-
DVC235



Dimension

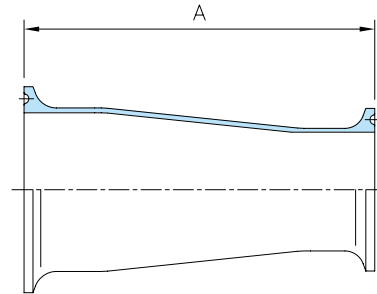
	A
1SxPT 3/8"	44
1SxPT 1"	44
1.5SxPT 1"	44
1.5SxPT 1 1/4"	44
1.5SxPT 1 1/2"	44
2SxPT 1 1/4"	49
2SxPT 1 1/2"	49
2SxPT 2"	49
2.5SxPT 2"	49
3SxPT 2 1/2"	80

Clamp Union Fittings

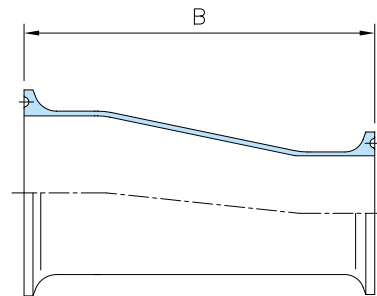
Dimension

	A	B
1Sx1/2S	58	60.5
1Sx3/4S	58	55
1.5Sx3/4S	83	85
1.5Sx1S	107	103.7
2Sx1S	109	112
2Sx1.5S	109	104.5
2.5Sx1S	113	117.5
2.5Sx1.5S	113	116
2.5Sx2S	115	109.3
3Sx1.5S	115	119.5
3Sx2S	117	120
3Sx2.5S	121	114
4Sx2S	153	158
4Sx2.5S	157	160.5
4Sx3S	159	147.4

Concentric Reducer - 2F- DVC220



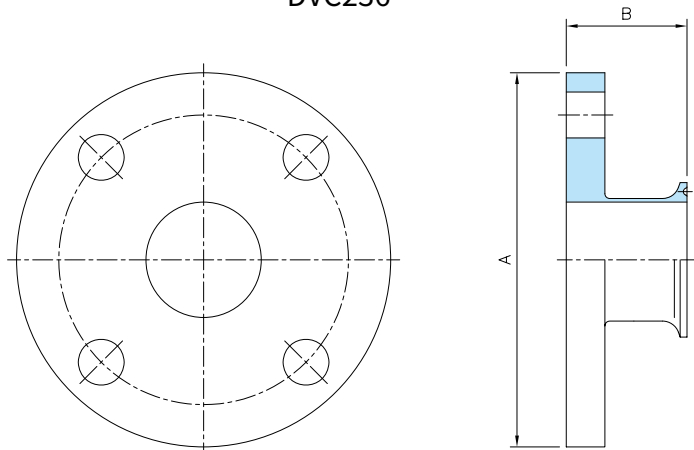
Eccentric Reducer - 2F- DVC222



Dimension

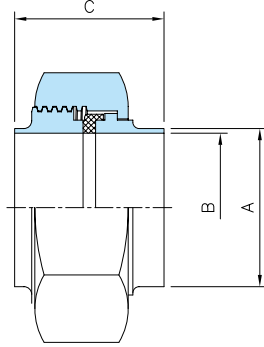
	A	B
1Sx20A	100	50
1.5Sx32A	135	50
2Sx40A	140	50
2.5Sx50A	155	50
3Sx65A	175	50
4Sx100A	210	50

Flange Adapter -F- DVC236

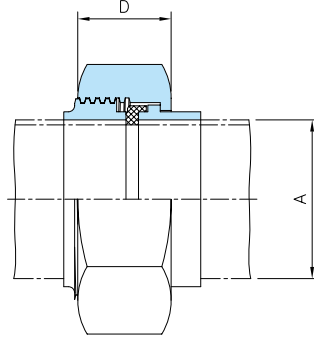


Hex Union Fittings

**Hex Union -W-
DVH314**



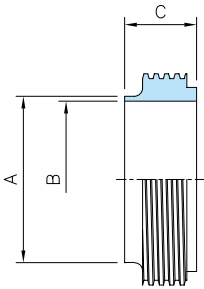
**Hex Union -EX-
DVH331**



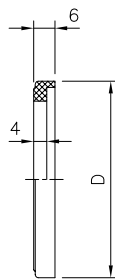
Dimension

	A	B	C	D
1S	25.4	23	44	44
1.5S	38.1	35.7	44	44
2S	50.8	47.8	48	48
2.5S	63.5	60.5	56	56
3S	76.3	72.3	60	60
4S	101.6	97.6	60	60

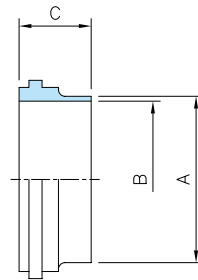
**Male -W-
DVH312**



**Hex Gasket
DVH329**



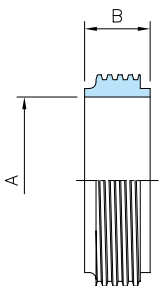
**Liner-W-
DVH313**



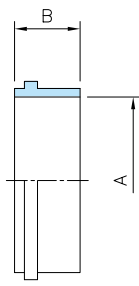
Dimension

	A	B	C	D
1S	25.4	23	20	33
1.5S	38.1	35.7	20	46.5
2S	50.8	47.8	22	60
2.5S	63.5	60.5	26	74
3S	76.3	72.3	28	87
4S	101.6	97.6	28	114

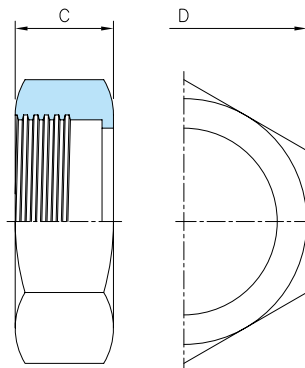
**Male -EX-
DVH332**



**Liner -EX-
DVH333**



**Hex Nut
DVH311**



Dimension

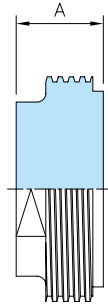
	A	B	C	D
1S	25.5	20	30	45
1.5S	38.3	20	360	56
2S	51	22	30	75
2.5S	63.8	25	30	90
3S	76.6	28	30	105
4S	102	28	35	130

Hex Union Fittings

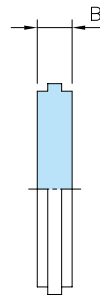
Dimension

	A	B	C
1S	30	11	45
1.5S	30	11	56
2S	30	11	75
2.5S	30	11	90
3S	30	11	105
4S	35	12	130

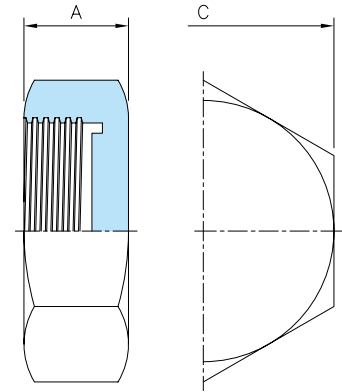
Male Blank
DVH334



Liner Blank
DVH335



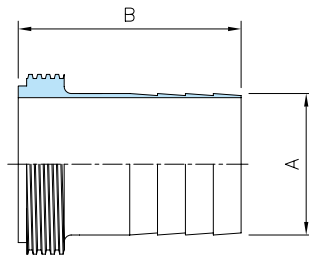
Hex Cap
DVH336



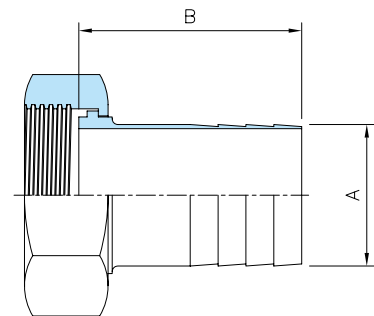
Dimension

	A	B
1S	25.4	60
1.5S	38.1	70
2S	50.8	80
2.5S	63.5	100
3S	76.3	100
4S	101.6	120

Hose Coupling -M-
DVH337



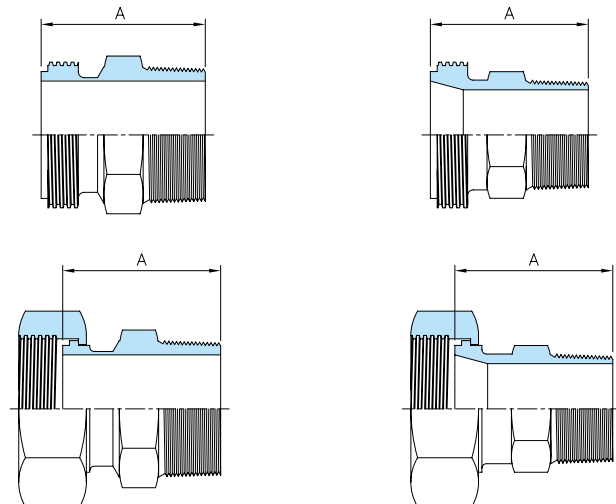
Hose Coupling -N-
DVH323



Dimension

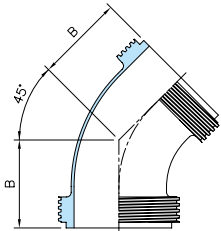
	A
1SxPT 3/8"	60
1SxPT 1"	60
1.5SxPT 1"	65
1.5SxPT 1 1/4"	65
1.5SxPT 1 1/2"	65
2SxPT 1 1/4"	70
2SxPT 1 1/2"	70
2SxPT 2"	70
2.5SxPT 2"	70
3SxPT 2 1/2"	100

Nipple Adapter
DVH338

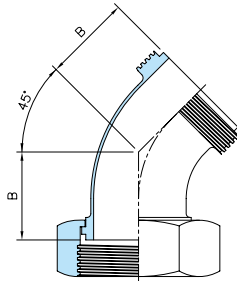


Hex Union Fittings

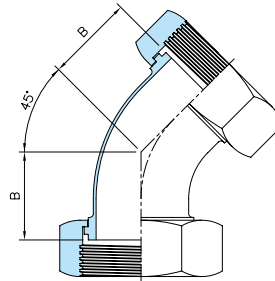
45° Elbow -2M-
DVH339



45° Elbow -1Nx1M-
DVH340

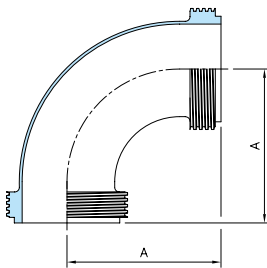


45° Elbow -2N-
DVH341

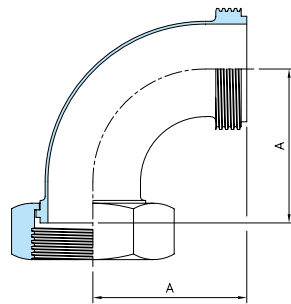


Dimension		
	A	B
1S	55	34.5
1.5S	70	40.7
2S	82	46.9
2.5S	105	58.7
3S	110	62
4S	162.5	83.7

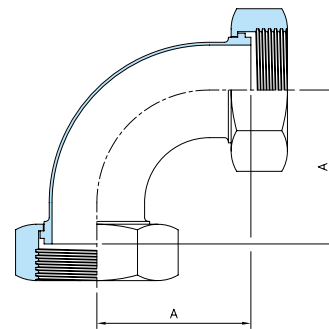
90° Elbow -2M-
DVH342



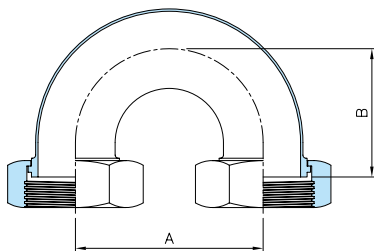
90° Elbow -1Mx1N-
DVH315



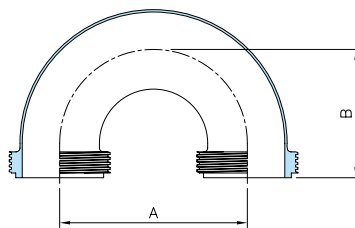
90° Elbow -2N-
DVH343



U-Bend -2N-
DVH325



U-Bend -2M-
DVH344



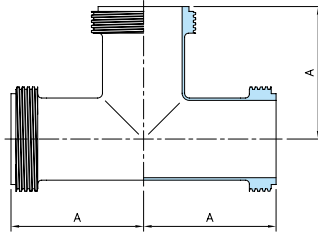
Dimension		
	A	B
1S	70	55
1.5S	100	70
2S	120	82
2.5S	158	105
3S	164	110
4S	269	162.5

Hex Union Fittings

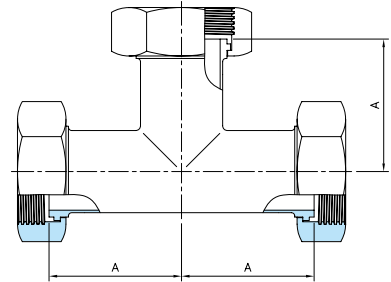
Dimension

	A
1S	55
1.5S	70
2S	82
2.5S	105
3S	110
4S	162.5

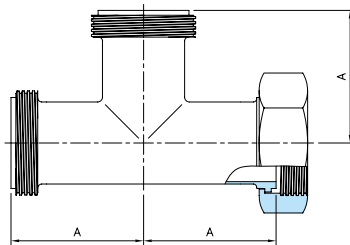
Tee -3M-
DVH345



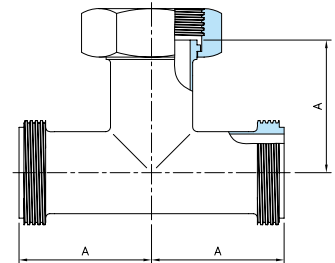
Tee -3N-
DVH346



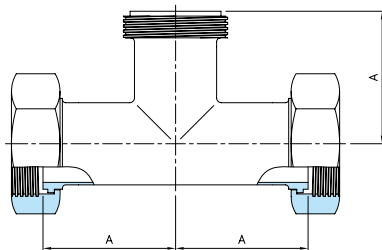
Tee -2Mx1N-
DVH317



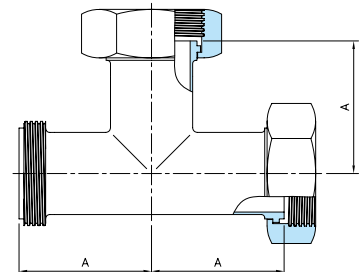
Tee -2Mx1N-
DVH347



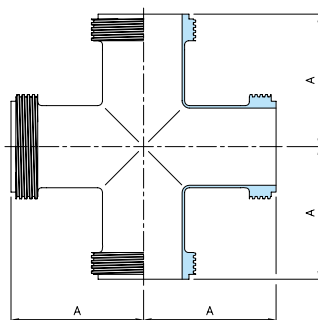
Tee -1Mx2N-
DVH348



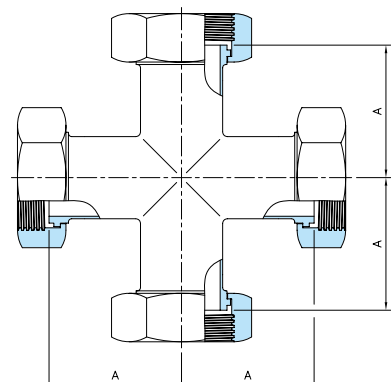
Tee -1Mx2N-
DVH349



Cross Tee -4M-
DVH350

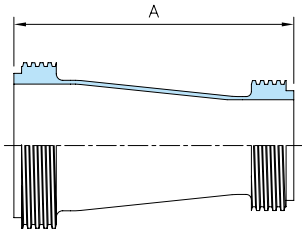


Cross Tee -4N-
DVH351

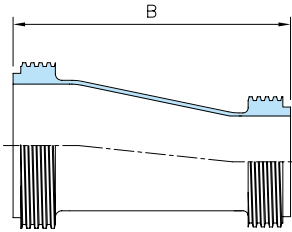


Hex Union Fittings

Concentric Reducer -2M-
DVH352



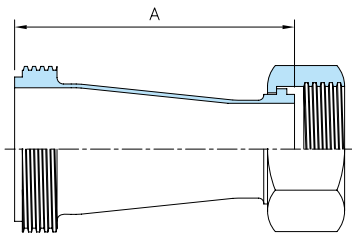
Eccentric Reducer -2M-
DVH355



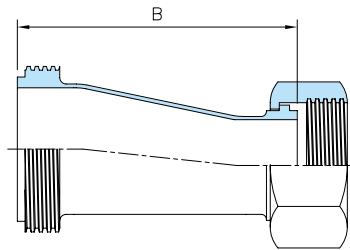
Dimension

	A	B
1.5Sx1S	107	103.7
2Sx1S	109	112
2Sx1.5S	109	104.5
2.5Sx1S	113	117.5
2.5Sx1.5S	113	116
2.5Sx2S	115	109.3
3Sx1.5S	115	119.5
3Sx2S	117	120
3Sx2.5S	121	114
4Sx2S	153	158
4Sx2.5S	157	160.5
4Sx3S	159	147.4

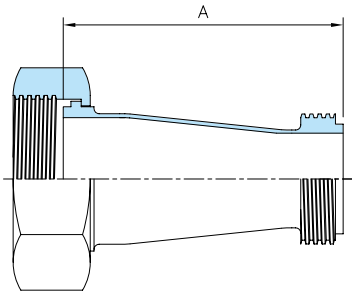
Concentric Reducer -1Mx1N-
DVH319



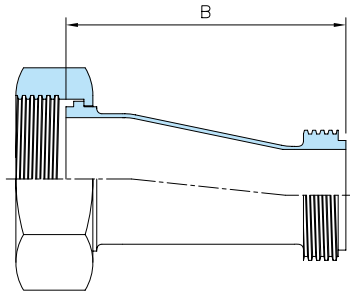
Eccentric Reducer -1Mx1N-
DVH321



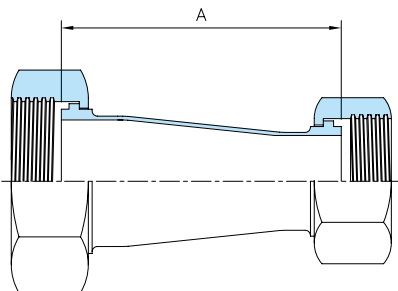
Concentric Reducer -1Nx1M-
DVH353



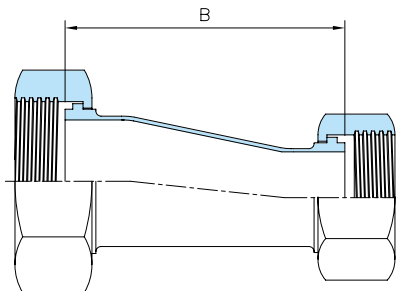
Eccentric Reducer -1Nx1M-
DVH356



Concentric Reducer -2N-
DVH354



Eccentric Reducer -2N-
DVH357

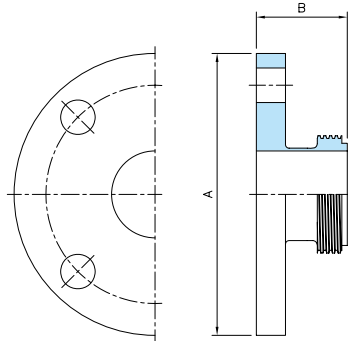


Hex Union Fittings

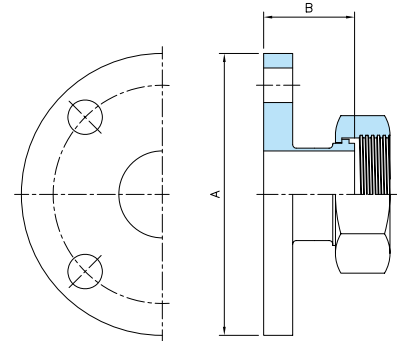
Dimension

	A	B
1Sx20A	100	50
1.5Sx32A	135	50
2Sx40A	140	50
2.5Sx50A	155	50
3Sx65A	175	50
4Sx100A	210	50

Flange Adapter -1M-
DVH358



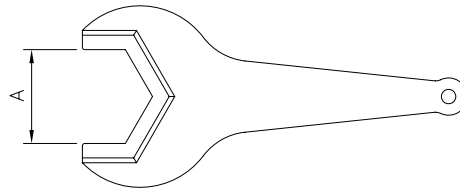
Flange Adapter -1N-
DVH359



Dimension

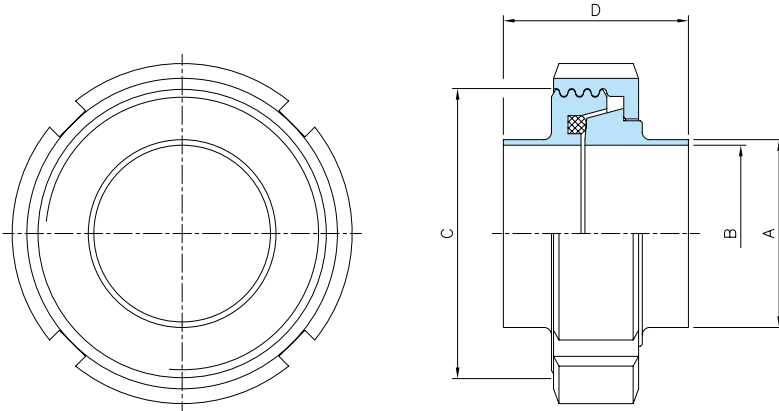
	A
1S	46
1.5S	57
2S	76
2.5S	91
3S	107
4S	132

Hex Spanner
DVH327



DIN Union Fittings

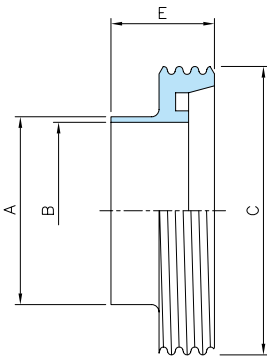
DIN Union
DVD414



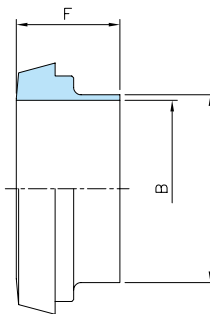
Dimension

DIN	A	B	C	D	E
10	13	10	RD 28-8	34	21
15	19	16	RD 34-8	34	21
20	23	20	RD 44-6	36	24
25	29	26	RD 52-6	45	29
32	35	32	RD 58-6	51	32
40	41	38	RD 65-6	53	33
50	53	50	RD 78-6	57	35
65	70	66	RD 95-6	65	40
80	85	81	RD 110-4	75	45
100	104	100	RD 130-4	89	54
125	129	125	RD 160-4	70	46
150	154	150	RD 190-4	76	50

DIN Male -W-
DVD412

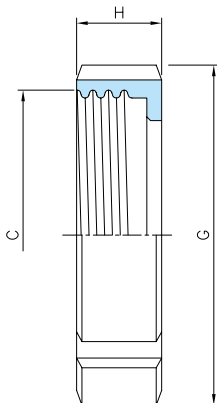


DIN Liner -W-
DVD413

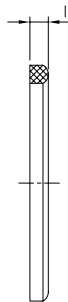


DIN	F	G	H	I
10	17	38	18	4.5
15	17	44	18	4.5
20	18	54	20	4.5
25	22	63	21	5
32	25	70	21	5
40	26	78	21	5
50	28	92	22	5
65	32	112	25	5
80	37	127	29	5
100	44	148	31	6
125	34	178	35	7
150	37	210	40	7

DIN Nut
DVD414



DIN Gasket
DVD430



Dimension

	A	B	C	D	E
1S	25.4	23	RD 52-6	43	24.5
1.5S	38.1	35.7	RD 65-6	51.6	29
2S	50.8	47.8	RD 78-6	50.6	29
2.5S	63.5	60.5	RD 95-6	64.9	40
3S	76.3	72.3	RD 110-4	70.3	42
4S	101.6	97.6	RD 130-4	89.6	54

	F	G	H	I
1S	24	63	23	5
1.5S	28	78	23	5
2S	28	92	26	5
2.5S	32	112	23	5
3S	35	127	28	5
4S	44	148	31	6

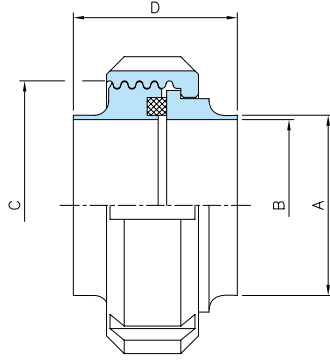
SMS Union Fittings

Dimension

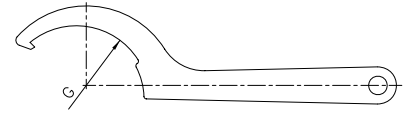
	A	B	C	D
1S	25.4	23	RD 40-6	33.5
1.5S	38.1	35.7	RD 60-6	41.5
2S	50.8	47.8	RD 70-6	41.5
2.5S	63.5	60.5	RD 85-6	50.5
3S	76.3	72.3	RD 98-6	55.5
4S	101.6	97.6	RD 132-6	71.5

	E	F	G	H
1S	20	20	51	20
1.5S	20	20	74	25
2S	22	22	84	26
2.5S	26	26	100	30
3S	28	28	114	32
4S	28	28	154	40

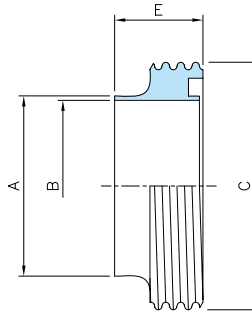
SMS Union
DVS511



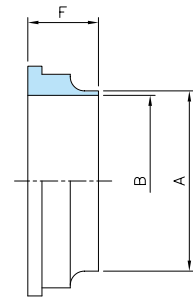
Round Spanner
DVD431



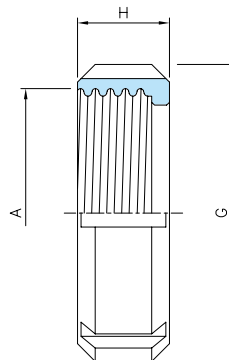
SMS Male -W-
DVS512



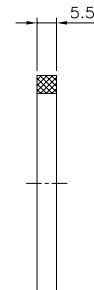
SMS Liner -W-
DVS513



SMS Nut
DVS514



SMS Gasket
DVS530





DK DIKOS

주식회사 **다이코스**

주소 : 경기도 화성시 향남읍 동오리 89-8번지

전화 : 031-8059-6750~2

팩스 : 031-8059-6760

홈페이지 : <http://www.dikos.kr>

이메일 : dikos@dikos.kr

※ 본 카탈로그에 실려있는 제품들의 치수, 사양 및 형상 등은 품질 향상을 위해 예고없이 변경 될 수 있습니다.